

**CITY OF KENT
INVESTMENT PORTFOLIO
December 31, 2016**

Purchase Date	Investment Description	Yield	Maturity	Market Value 12/31/2016	Investment Total
12/31/16	State Local Government Investment Pool	0.508%	Overnight	100,043,099	100,043,099
04/29/16	CD US Bank	0.300%	04/28/17	254,874	254,874
06/19/15	FICO Strip	1.000%	11/30/17	2,927,880	2,929,397
03/31/15	FICO Strip	1.019%	02/08/18	1,055,652	1,058,169
03/31/15	FICO Strip	1.149%	05/11/18	3,048,843	3,057,551
04/12/16	FICO Strip	0.840%	12/27/18	3,957,611	4,022,674
10/09/15	FICO Strip	1.433%	09/26/19	4,046,358	4,068,178
04/10/87	Federal Home Loan Mortgage Corp	8.508%	11/29/19	948,324	786,845
10/19/15	Federal Home Loan Bank	1.530%	10/19/20	3,954,200	4,010,138
				120,236,841	120,230,927

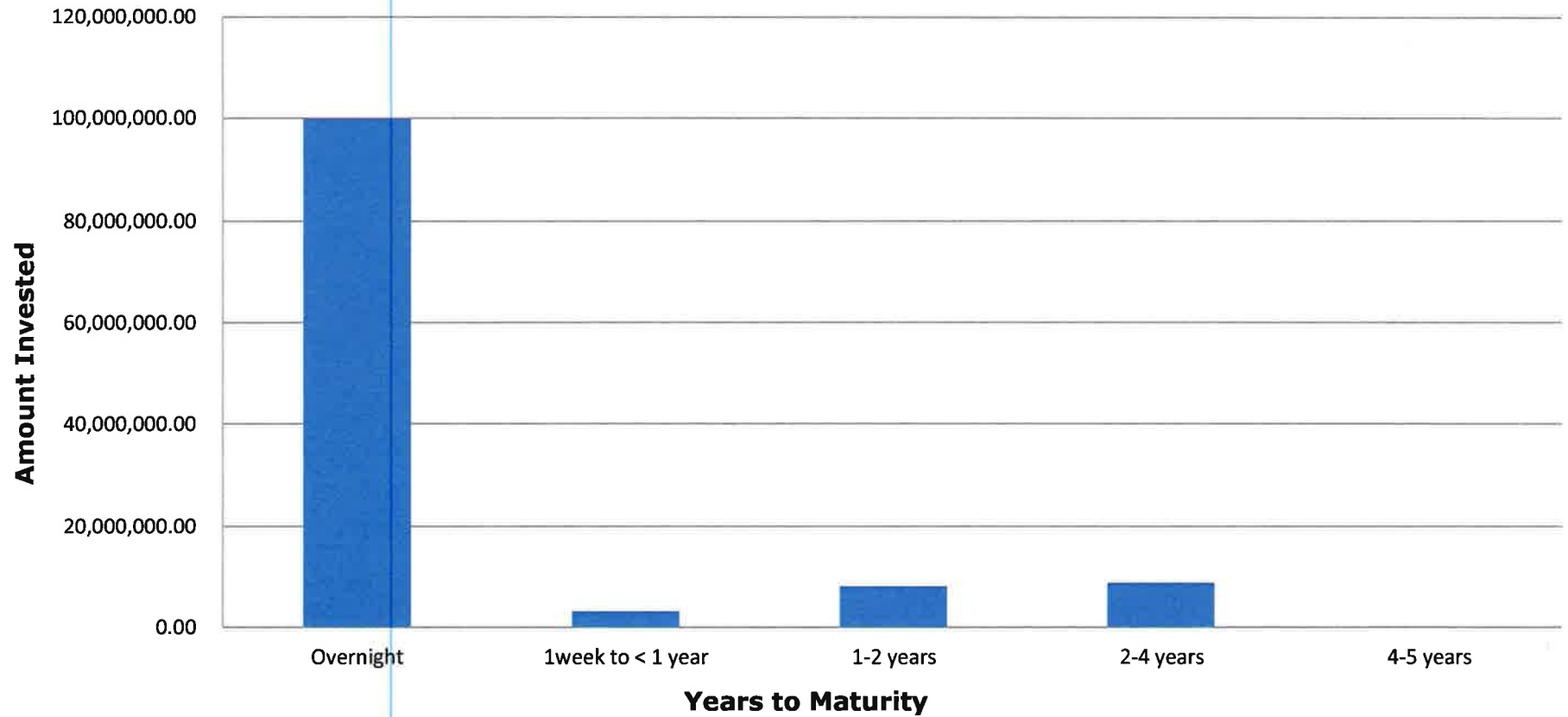
Average Rate of Return: 1.385%
Average Days to Maturity: 614 Days
Average Years to Maturity: 1.68 Years

Total Investment By Fund

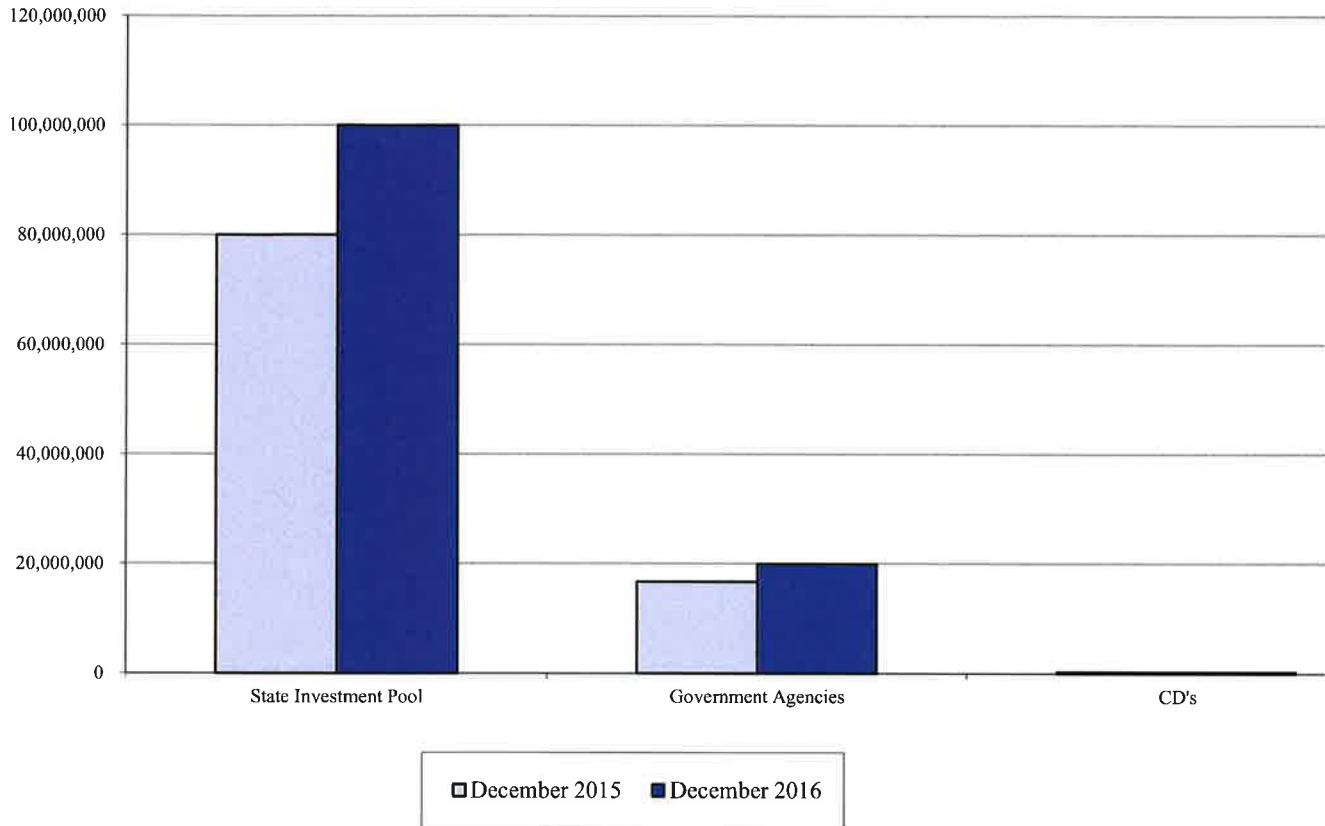
General Fund	5,595,841
Street Fund	547,089
PS Retiree Healthcare Fund	151,661
Capital Resources Fund	813,454
Criminal Justice Fund	237,010
Street Capital Fund	1,314,278
Water Fund	3,763,789
Sewerage Fund	2,238,071
Fleet Service Fund	843,130
Facilities Fund	686,719
Unemployment Fund	201,206
Workers Comp Fund	716,985
Medical Insurance Fund	1,468,605
Firemen's Relief and Pension Fund	1,609,989
Subtotal:	20,187,828
LGIP (Pooled)	100,043,099
Total Investments:	120,230,927

Purchase Date	Investment Fund Allocation	Yield
04/29/16	CD US Bank	0.300%
100.00%	Workers Comp Fund	254,874
	Total Investment:	254,874
06/19/15	FICO Strip	1.000%
67.00%	General Fund	1,933,647
33.00%	Water Fund	966,678
	Total Investment:	2,929,397
03/31/15	FICO Strip	1.019%
40.00%	General Fund	418,992
20.00%	Water Fund	209,496
20.00%	Medical Insurance Fund	209,496
20.00%	Firemen's Relief and Pension Fund	209,496
	Total Investment:	1,058,169
03/31/15	FICO Strip	1.149%
40.00%	General Fund	1,209,054
20.00%	Water Fund	604,527
20.00%	Medical Insurance Fund	604,527
20.00%	Firemen's Relief and Pension Fund	604,527
	Total Investment:	3,057,551
04/12/16	FICO Strip	0.840%
15.99%	General Fund	639,438
4.77%	Street Fund	190,753
1.29%	PS Retiree Healthcare Fund	51,669
6.41%	Capital Resources Fund	256,240
1.89%	Criminal Justice Fund	75,400
15.98%	Street Capital Fund	638,947
21.20%	Water Fund	847,424
15.02%	Sewerage Fund	600,496
6.33%	Fleet Service Fund	252,935
4.08%	Facilities Fund	163,116
1.42%	Unemployment Fund	56,775
2.25%	Workers Comp Fund	89,819
3.38%	Medical Insurance Fund	135,179
	Total Investment:	4,022,674
10/09/15	FICO Strip	1.433%
16.75%	General Fund	671,623
4.40%	Street Fund	176,282
1.23%	PS Retiree Healthcare Fund	49,473
6.88%	Capital Resources Fund	275,785
1.99%	Criminal Justice Fund	79,983
8.31%	Street Capital Fund	333,247
13.76%	Water Fund	551,756
20.23%	Sewerage Fund	810,958
7.29%	Fleet Service Fund	292,164
6.47%	Facilities Fund	259,386
1.78%	Unemployment Fund	71,513
4.60%	Workers Comp Fund	184,508
6.31%	Medical Insurance Fund	252,859
	Total Investment:	4,068,178
04/10/87	Federal Home Loan Mortgage Corp	8.508%
100.00%	Firemen's Relief and Pension Fund	786,845
	Total Investment:	786,845
10/19/15	Federal Home Bank	1.530%
16.75%	General Fund	672,171
4.40%	Street Fund	176,425
1.23%	PS Retiree Healthcare Fund	49,513
6.88%	Capital Resources Fund	276,010
1.99%	Criminal Justice Fund	80,048
8.31%	Street Capital Fund	333,519
13.76%	Water Fund	552,206
20.23%	Sewerage Fund	811,619
7.29%	Fleet Service Fund	292,403
6.47%	Facilities Fund	259,597
1.78%	Unemployment Fund	71,571
4.60%	Workers Comp Fund	184,659
6.31%	Medical Insurance Fund	253,065
	Total Investment:	4,010,138
		20,187,828

**CITY OF KENT
INVESTMENTS BY MATURITY 12/31/2016**



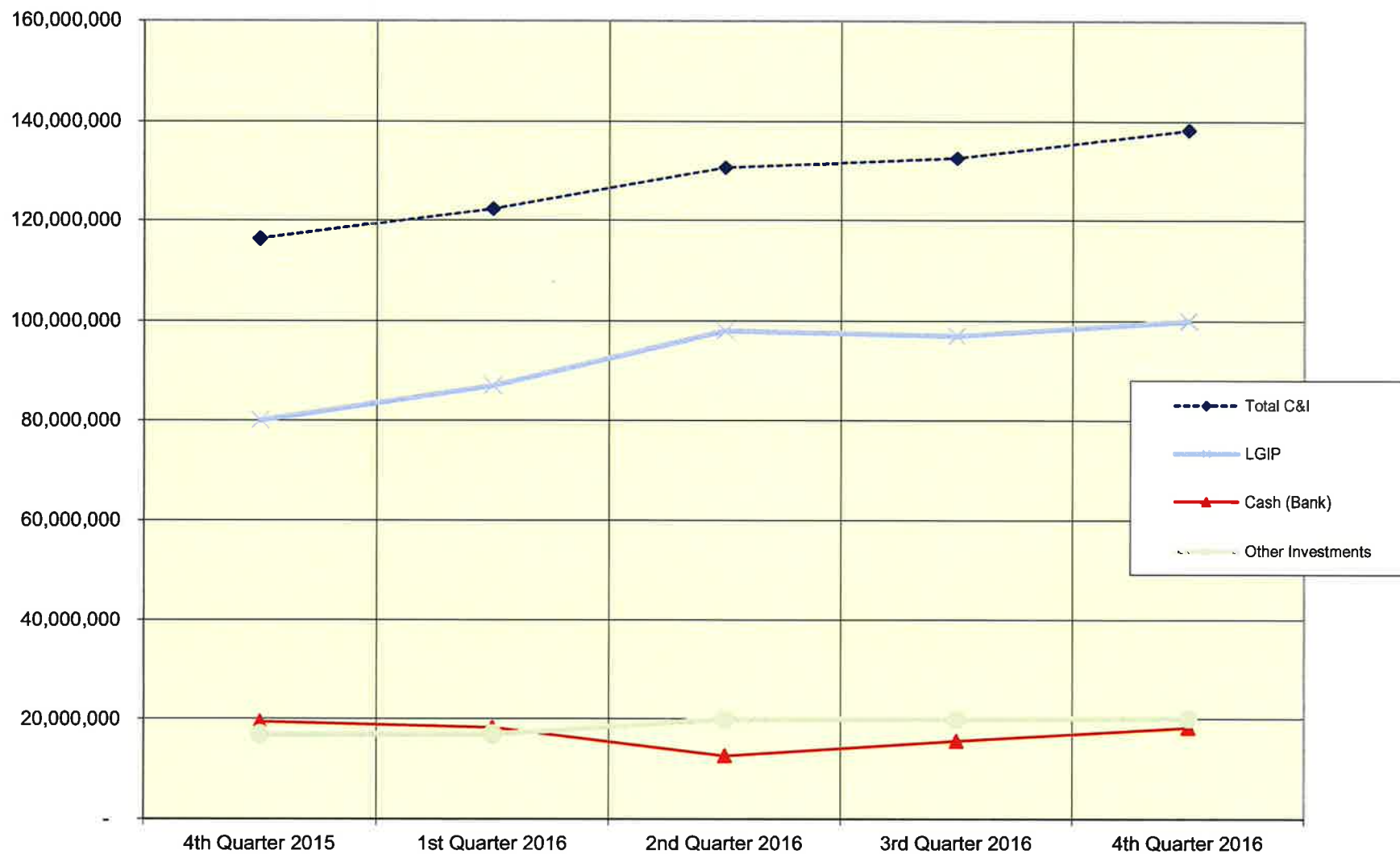
CITY OF KENT INVESTMENTS TYPE COMPARISON



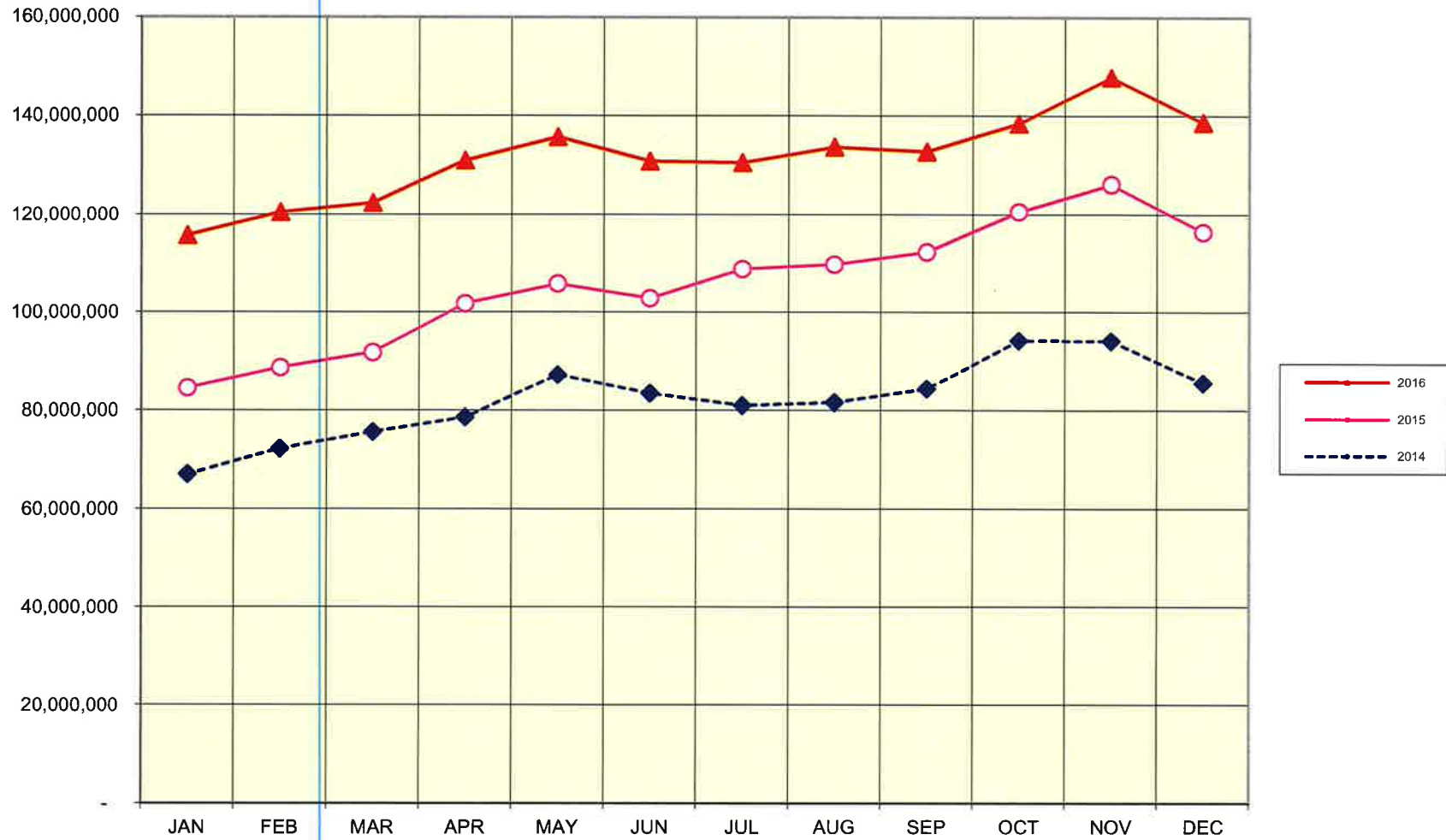
INVESTMENTS BY TYPE	% of Total	December 2016
State Investment Pool	83.21%	100,043,099
Government Agencies	16.58%	19,932,954
CD's	0.21%	254,874
	100.00%	120,230,927

INVESTMENTS BY TYPE	% of Total	December 2015
State Investment Pool	82.50%	80,017,206
Government Agencies	17.23%	16,715,638
CD's	0.26%	254,874
	100.00%	96,987,718

**CITY OF KENT
CASH AND INVESTMENTS BY TYPE
QUARTER ENDING BALANCES
2015 Q4 AND 2016 Q1-Q4**



CASH AND INVESTMENTS MONTH ENDING BALANCES 2014 / 2015 / 2016



**City of Kent
Investment Earnings Outlook
December 31, 2016**

	Q1 2016 Investment	Q2 2016 Investment	Q3 2016 Investment	Q4 2016 Investment	Q1 Interest	Q2 Interest	Q3 Interest	Q4 Interest	2016 Interest
Gov't Agency	16,000,000	19,000,000	19,000,000	19,000,000	64,000	63,793	63,793	65,788	257,373
LGIP	87,000,000	98,000,000	97,000,000	100,000,000	91,350	120,050	120,644	120,675	452,719
					<u>155,350</u>	<u>183,843</u>	<u>184,436</u>	<u>186,463</u>	<u>710,091</u>

If only invested in the LGIP

	Q1 2016 Investment	Q2 2016 Investment	Q3 2016 Investment	Q4 2016 Investment	Q1 Interest	Q2 Interest	Q3 Interest	Q4 Interest	2016 Interest
LGIP	103,000,000	117,000,000	116,000,000	119,000,000	108,150	143,325	144,275	143,603	539,353
					<u>108,150</u>	<u>143,325</u>	<u>144,275</u>	<u>143,603</u>	<u>539,353</u>

	Q1 Interest	Q2 Interest	Q3 Interest	Q4 Interest	2016 Interest
LGIP + Gov't Agency Quarterly Earnings	155,350	183,843	184,436	186,463	710,091
LGIP Only Quarterly Earnings	108,150	143,325	144,275	143,603	539,353
Additional Quarterly Earnings	<u>47,200</u>	<u>40,518</u>	<u>40,161</u>	<u>42,859</u>	<u>170,738</u>