

Illicit Discharges

Under the Federal Clean Water Act, it is illegal to allow any pollution to enter the stormwater drainage system or natural waters; including lakes, rivers, streams and wetlands.

Kent City Code 7.14 prohibits the discharge of hazardous materials (see partial list below) into the storm drainage system. Any person who violates this code may be liable for civil and criminal penalties, including up to 90 days in jail, a \$1,000 fine and all associated clean-up costs.

- Solid waste, trash or debris
- Human and animal waste
- Petroleum products
- Antifreeze
- Construction materials
- Acids, alkalis or bases
- Paints, stains, resins, lacquers or varnishes
- Metals in excess of naturally occurring amounts
- Solvents and degreasers
- Pesticides, herbicides or fertilizers
- Steam-cleaning waste
- Laundry waste, soap, detergent and ammonia
- Domestic or sanitary sewage
- Food and food waste including fats, oils and grease (FOG)
- RV waste
- Swimming pool or spa filter
- Chlorine, bromine or other disinfectants
- Yard waste, dirt and sand
- Bark and other fibrous materials
- Collected lawn clippings, leaves or branches
- Silt, sediment, concrete, cement or gravel
- Any other process-associated discharge except as otherwise allowed in Kent City Code 7.14
- Any hazardous material or waste not listed above

Keep Kent's Water Clean



For more information, visit the following links

Hazardous Material Collection/Recycling:

HazWasteHelp.org
fortress.wa.gov/ecy/recycle/UISearch/ServiceSearch.aspx

Vehicle Leaks:

FixCarLeaks.org

Educational Resources:

StormwaterPartners.com
WASstormwaterCenter.org

Remember

What goes in here...



Ends up here



Public Works Engineering

400 West Gowe Street
Kent, WA 98032
Phone: 253-856-5500

ONLY RAIN DOWN THE DRAIN

Did you know?

Storm drains discharge untreated water directly to local lakes, rivers, streams and wetlands.

About 75% of the pollution in Puget Sound comes from stormwater runoff caused by everyday activities like car washing, fertilizing and vehicle leaks.

**If it's on the ground,
it's in our water.**



How to Protect Water Quality

Only Hire Responsible Contractors

- Mobile businesses such as painters, carpet cleaners, power washers and janitorial services should never dispose of wastewater into storm drains.
- Ensure wastewater is disposed of in the sanitary sewer or at a permitted hazardous waste facility.
- Recycle old and unused paint and chemicals.



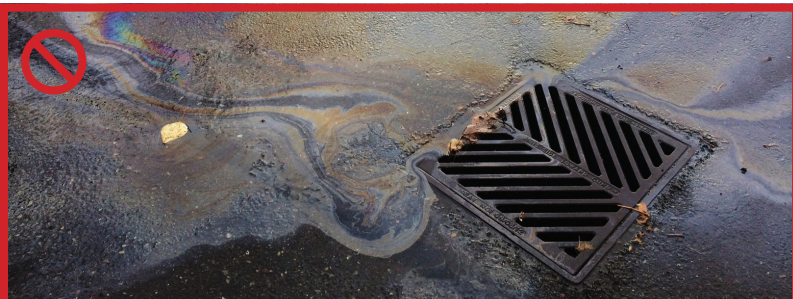
Properly Recycle or Dispose of Household Hazardous Waste

Check the Department of Ecology's recycle database to find where to recycle vehicle fluids and other hazardous waste:

Visit fortress.wa.gov/ecy/recycle/UISearch/ServiceSearch.aspx or call 1-800-RECYCLE.

Keep a Spill Kit On-site to Clean Up Accidents

- Clean up spills immediately to prevent contamination of the stormwater system.



Wash Your Car on the Lawn or at a Carwash

Don't wash your car on the street or driveway.



Get Vehicle Leaks Fixed Immediately

- Don't let your car leak onto the street. Use drip pans or cardboard to catch leaks.
- Clean up spills immediately with dry absorbents, sweep, place in sealed containers/bags and dispose of in trash.
- NEVER dump oil or vehicle fluids down the drain or into the street.



Keep Dumpsters and Trash Compactors Clean

- Keep the lid closed at all times.
- Ensure the dumpster is not leaking.
- Keep surrounding area clean and free of litter.



Pick Up After Your Pet

Scoop, bag and throw it in the trash, NOT the compost



Careful Lawn Care

- Read the label and use herbicides, pesticides and fertilizers sparingly.
- Never apply when it is windy or rain is expected.
- Sweep up spills or excess on sidewalk and street.
- Try non-chemical alternatives such as compost, mulch, hand pulling weeds and planting companion plants to deter pests.

