








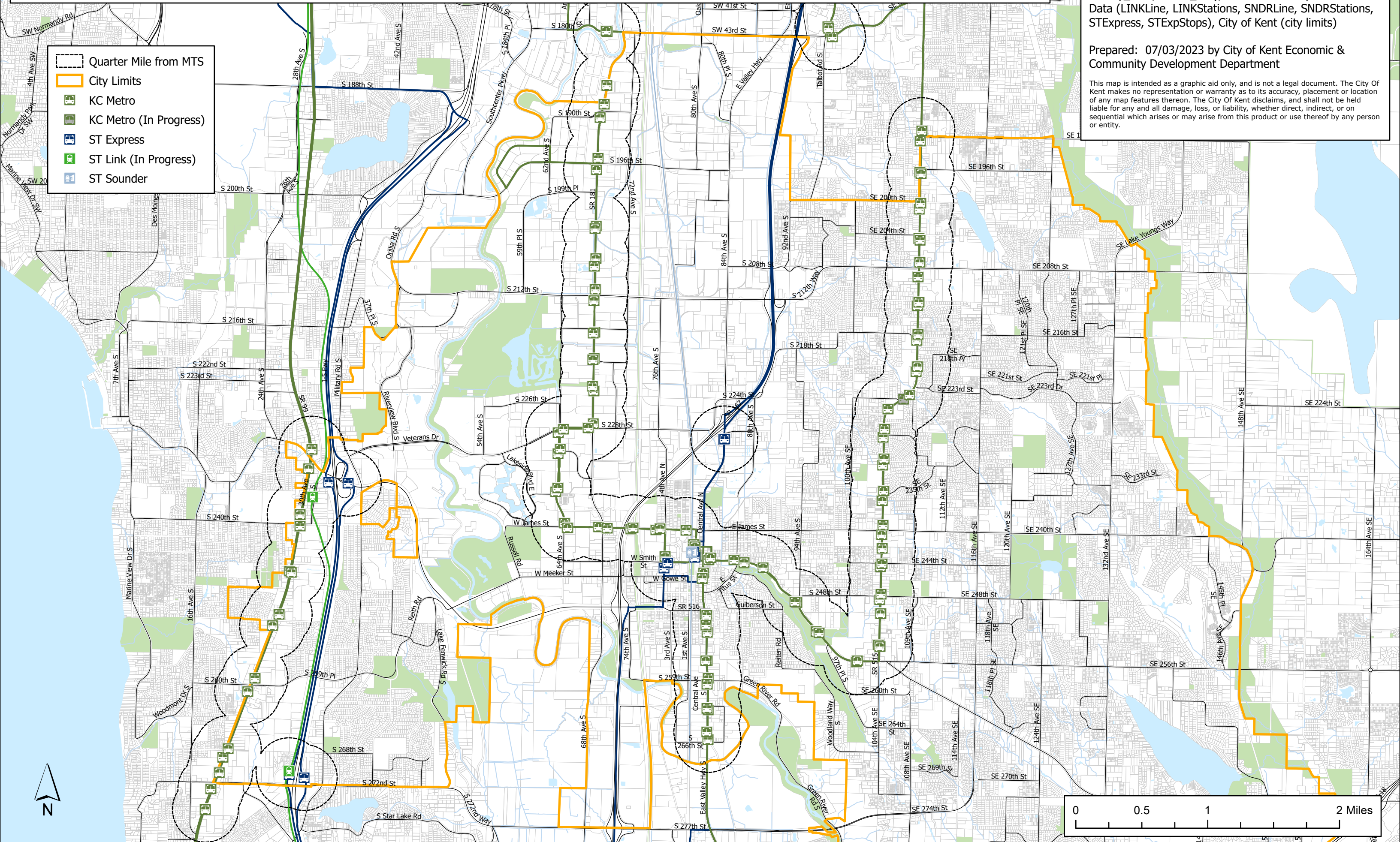
Quarter-mile Buffer from Major Transit Stops

Sources as of 06/20/23: King County GIS Open Data (transitstop, transitroute, trans network car, park_area, wrtbdy_area, wtrcrs_line), Sound Transit Open Transit Data (LINKLine, LINKStations, SNDRLine, SNDRStations, STExpress, STExpStops), City of Kent (city limits)

Prepared: 07/03/2023 by City of Kent Economic & Community Development Department

This map is intended as a graphic aid only, and is not a legal document. The City of Kent makes no representation or warranty as to its accuracy, placement or location of any map features thereon. The City of Kent disclaims, and shall not be held liable for any and all damage, loss, or liability, whether direct, indirect, or on sequential which arises or may arise from this product or use thereof by any person or entity.

-  Quarter Mile from MTS
-  City Limits
-  KC Metro
-  KC Metro (In Progress)
-  ST Express
-  ST Link (In Progress)
-  ST Sounder



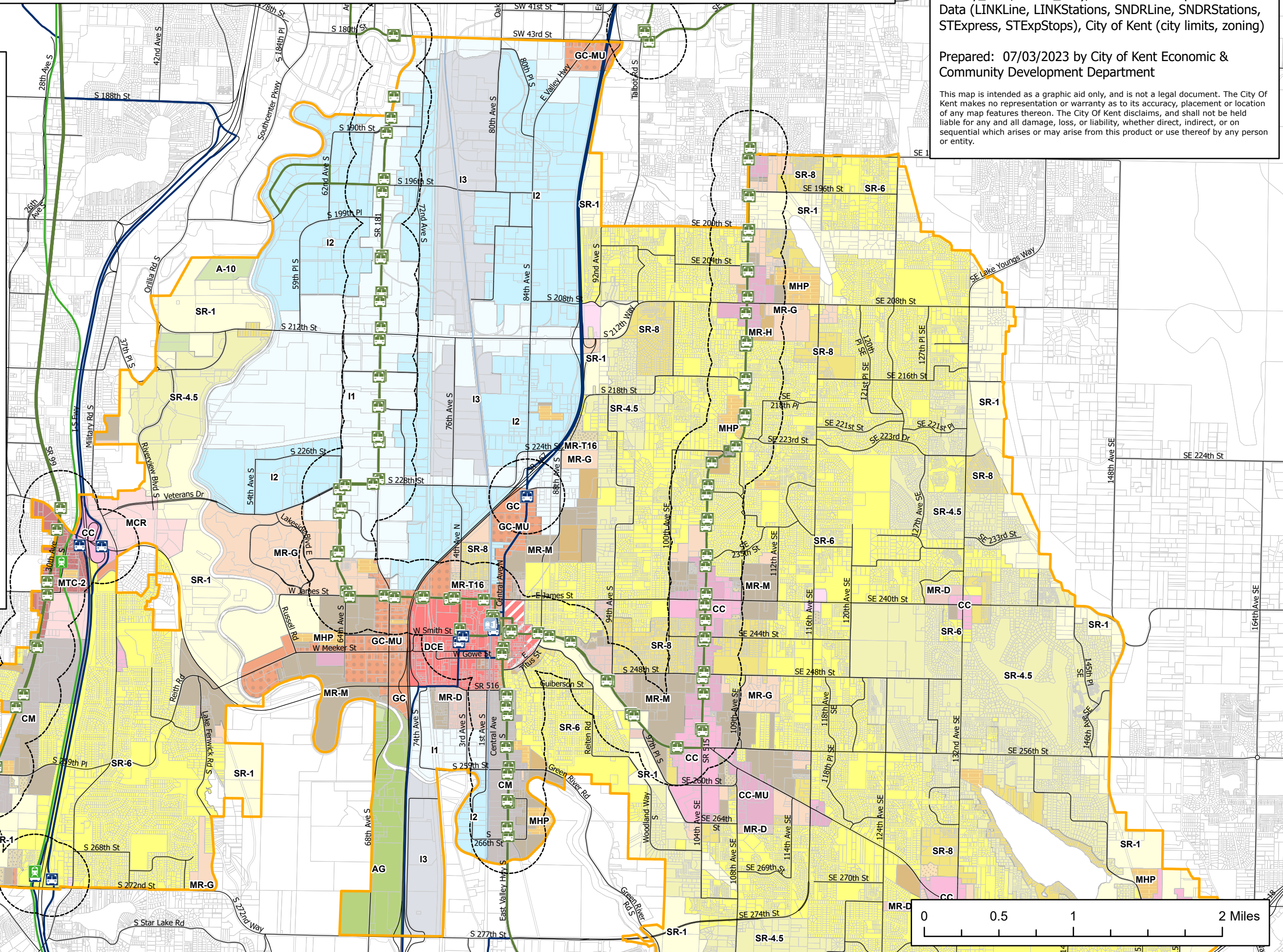
Quarter-mile Buffer from Major Transit Stops

Sources as of 06/20/23: King County GIS Open Data (transitstop, transitroute, trans network car, park_area, wrtbody_area, wtrcrs_line), Sound Transit Open Transit Data (LINKLine, LINKStations, SNDRLine, SNDRStations, STExpress, STExpStops), City of Kent (city limits, zoning)

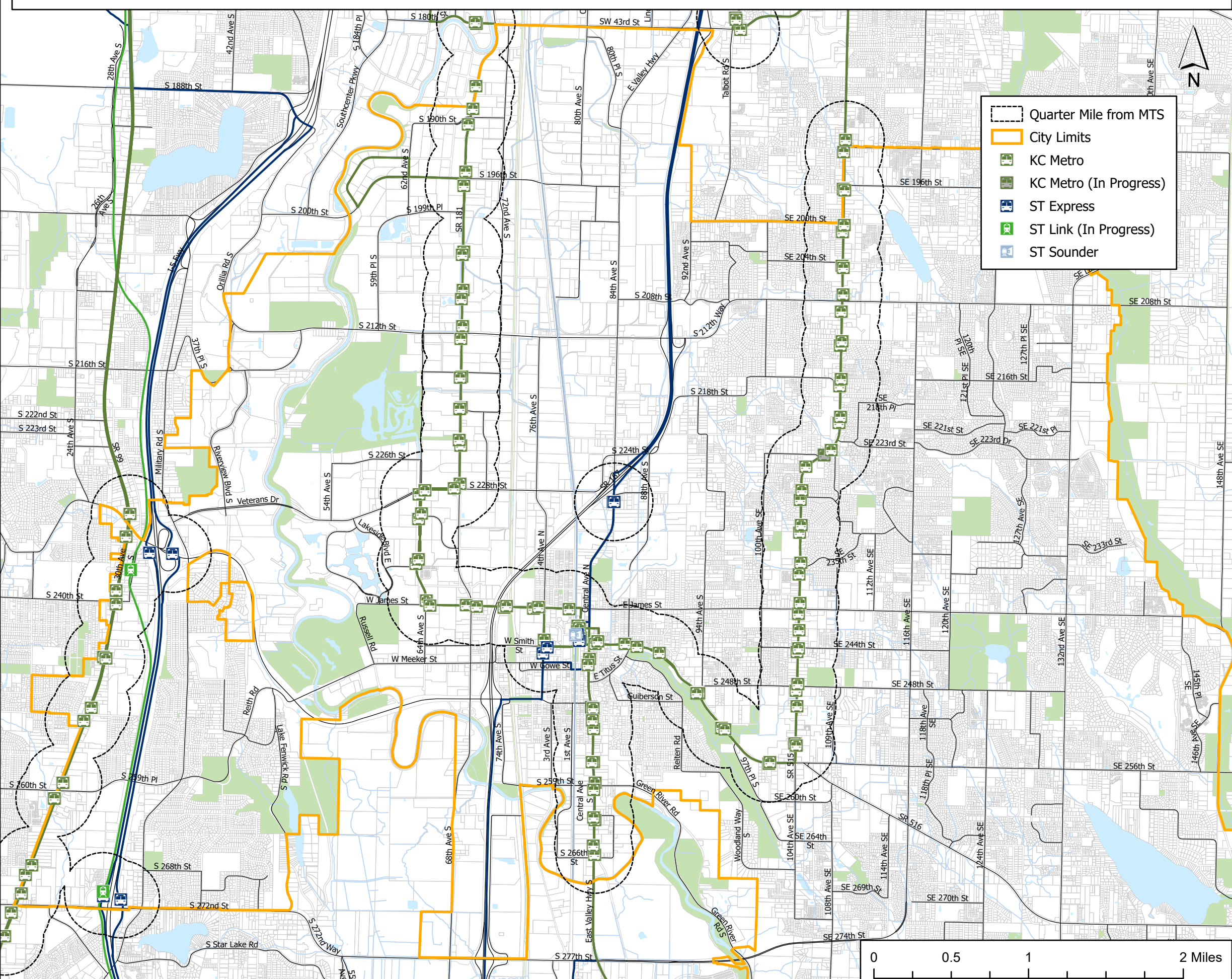
Prepared: 07/03/2023 by City of Kent Economic & Community Development Department

This map is intended as a graphic aid only, and is not a legal document. The City of Kent makes no representation or warranty as to its accuracy, placement or location of any map features thereon. The City of Kent disclaims, and shall not be held liable for any and all damage, loss, or liability, whether direct, indirect, or on sequential which arises or may arise from this product or use thereof by any person or entity.

- Quarter Mile from MTS
 - City Limits
 - KC Metro
 - KC Metro (In Progress)
 - ST Express
 - ST Link (In Progress)
 - ST Sounder
- Zoning Districts**
- Agricultural 1 Unit/10 Acres
 - Agricultural General
 - Single-Family (SR-1)
 - Single-Family (SR-3)
 - Single-Family (SR-4.5)
 - Single-Family (SR-6)
 - Single-Family (SR-8)
 - Duplex Multifamily
 - Townhouse/Condo MRT-12
 - Townhouse/Condo MRT-16
 - Garden Density Multifamily
 - Medium Density Multifamily
 - High Density Multifamily
 - Mobile Home Park
 - Neighborhood Convenience Commercial
 - Downtown Commercial
 - Downtown Commercial Enterprise
 - Downtown Commercial Enterprise - Transitional Overlay
 - Community Commercial
 - Community Commercial/Mixed Use
 - General Commercial
 - General Commercial/Mixed Use
 - Midway Commercial Residential
 - Midway Transit Community I
 - Midway Transit Community II
 - Commercial Manufacturing
 - Industrial Business
 - Mixed Industrial
 - Heavy Industrial



Quarter-mile Buffer from Major Transit Stops



This map depicts areas in the City of Kent within one quarter-mile of a Major Transit Stop as defined by RCW 36.70A.696:

- (7) "Major transit stop" means:
- (a) A stop on a high capacity transportation system funded or expanded under the provisions of chapter 81.104 RCW;
 - (b) Commuter rail stops;
 - (c) Stops on rail or fixed guideway systems, including transitways;
 - (d) Stops on bus rapid transit routes or routes that run on high occupancy vehicle lanes; or
 - (e) Stops for a bus or other transit mode providing actual fixed route service at intervals of at least fifteen minutes for at least five hours during the peak hours of operation on weekdays. [EHB 1337, effective 07/23/23]

One off-street parking space per accessory unit is required in addition to the required parking for the single-family home.

No off-street parking is required if principal single-family dwelling is within 1/4 mile distance of a major transit stop as defined by RCW 36.70A.696.

The planning director may waive this requirement where there are special circumstances related to the property, its location, and the right-of-way. The surface of a required ADU off-street parking space shall comply with KCC 15.05.090(E). [KCC 15.05.040, Ordinance 4464, effective 06/15/23]

Major Transit Stops: Sound Transit Link (1 Line), Sound Transit Sounder (S Line), Sound Transit Express (Routes 566, 574), King County Metro (existing Routes A-Line, 150, 160, proposed I-Line)

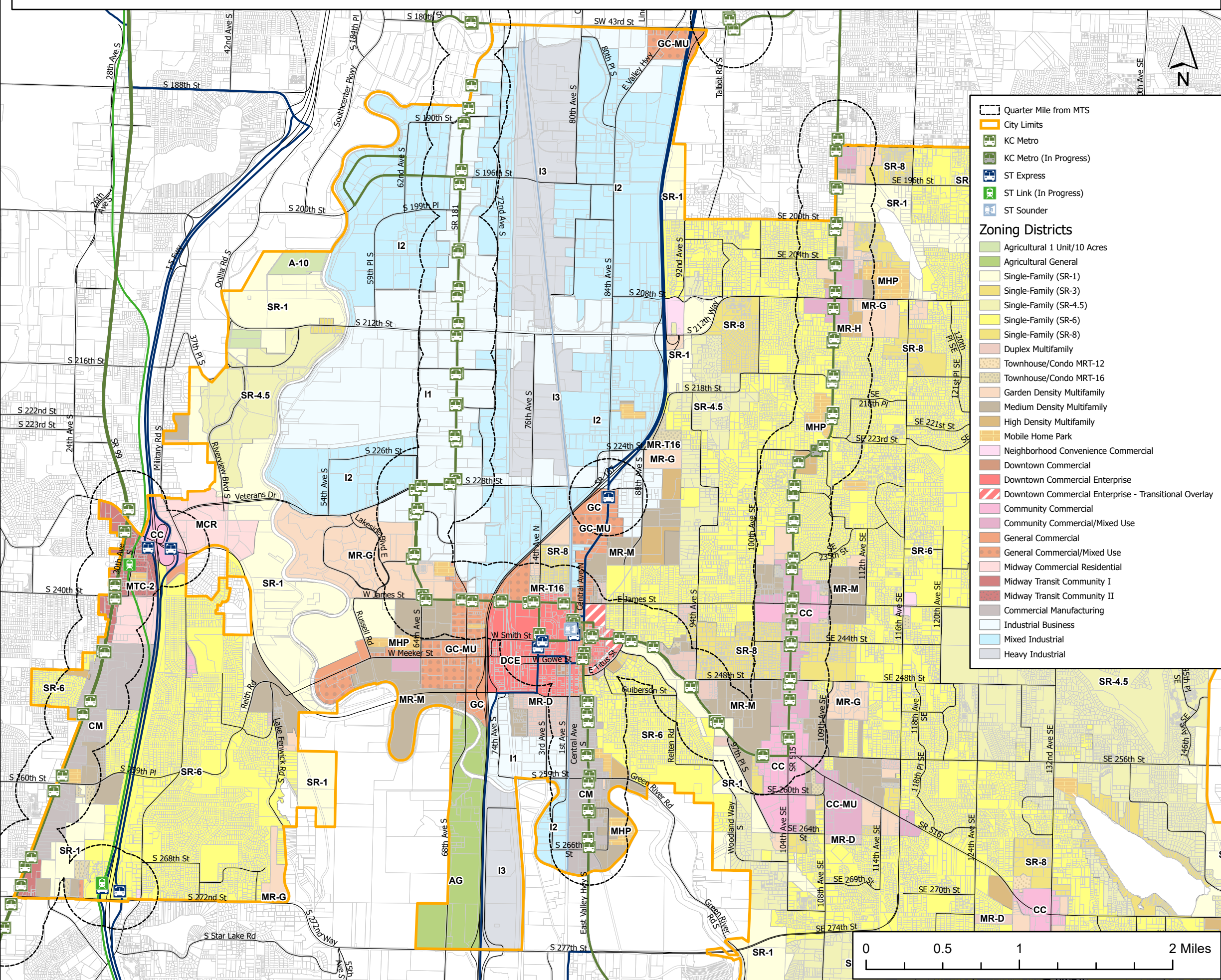
Areas not depicted are not within one-quarter mile of a Major Transit Stop.

Sources as of 06/20/23: King County GIS Open Data (transitstop, transitroute, trans network car, park_area, wtrbdy_area, wtrcrs_line), Sound Transit Open Transit Data (LINKLine, LINKStations, SNDRLine, SNDRStations, STExpress, STExpStops), City of Kent (city limits)

Prepared: 07/03/2023 by City of Kent Economic & Community Development Department

This map is intended as a graphic aid only, and is not a legal document. The City Of Kent makes no representation or warranty as to its accuracy, placement or location of any map features thereon. The City Of Kent disclaims, and shall not be held liable for any and all damage, loss, or liability, whether direct, indirect, or on sequential which arises or may arise from this product or use thereof by any person or entity.

Quarter-mile Buffer from Major Transit Stops



This map depicts areas in the City of Kent within one quarter-mile of a Major Transit Stop as defined by RCW 36.70A.696:

- (7) "Major transit stop" means:
- (a) A stop on a high capacity transportation system funded or expanded under the provisions of chapter 81.104 RCW;
 - (b) Commuter rail stops;
 - (c) Stops on rail or fixed guideway systems, including transitways;
 - (d) Stops on bus rapid transit routes or routes that run on high occupancy vehicle lanes; or
 - (e) Stops for a bus or other transit mode providing actual fixed route service at intervals of at least fifteen minutes for at least five hours during the peak hours of operation on weekdays. [EHB 1337, effective 07/23/23]

One off-street parking space per accessory unit is required in addition to the required parking for the single-family home.

No off-street parking is required if principal single-family dwelling is within 1/4 mile distance of a major transit stop as defined by RCW 36.70A.696.

The planning director may waive this requirement where there are special circumstances related to the property, its location, and the right-of-way. The surface of a required ADU off-street parking space shall comply with KCC 15.05.090(E). [KCC 15.05.040, Ordinance 4464, effective 06/15/23]

Major Transit Stops: Sound Transit Link (1 Line), Sound Transit Sounder (S Line), Sound Transit Express (Routes 566, 574), King County Metro (existing Routes A-Line, 150, 160, proposed I-Line)

Areas not depicted are not within one-quarter mile of a Major Transit Stop.

Sources as of 06/20/23: King County GIS Open Data (transitstop, transitroute, trans network car, park_area, wtrbdy_area, wtrcrs_line), Sound Transit Open Transit Data (LINKLine, LINKStations, SNDRLine, SNDRStations, STExpress, STExpStops), City of Kent (city limits, zoning)

Prepared: 07/03/2023 by City of Kent Economic & Community Development Department

This map is intended as a graphic aid only, and is not a legal document. The City Of Kent makes no representation or warranty as to its accuracy, placement or location of any map features thereon. The City Of Kent disclaims, and shall not be held liable for any and all damage, loss, or liability, whether direct, indirect, or on sequential which arises or may arise from this product or use thereof by any person or entity.