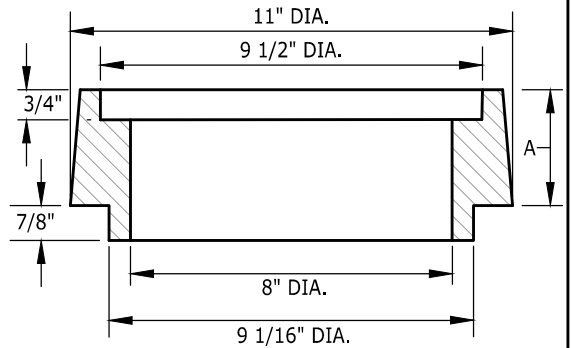
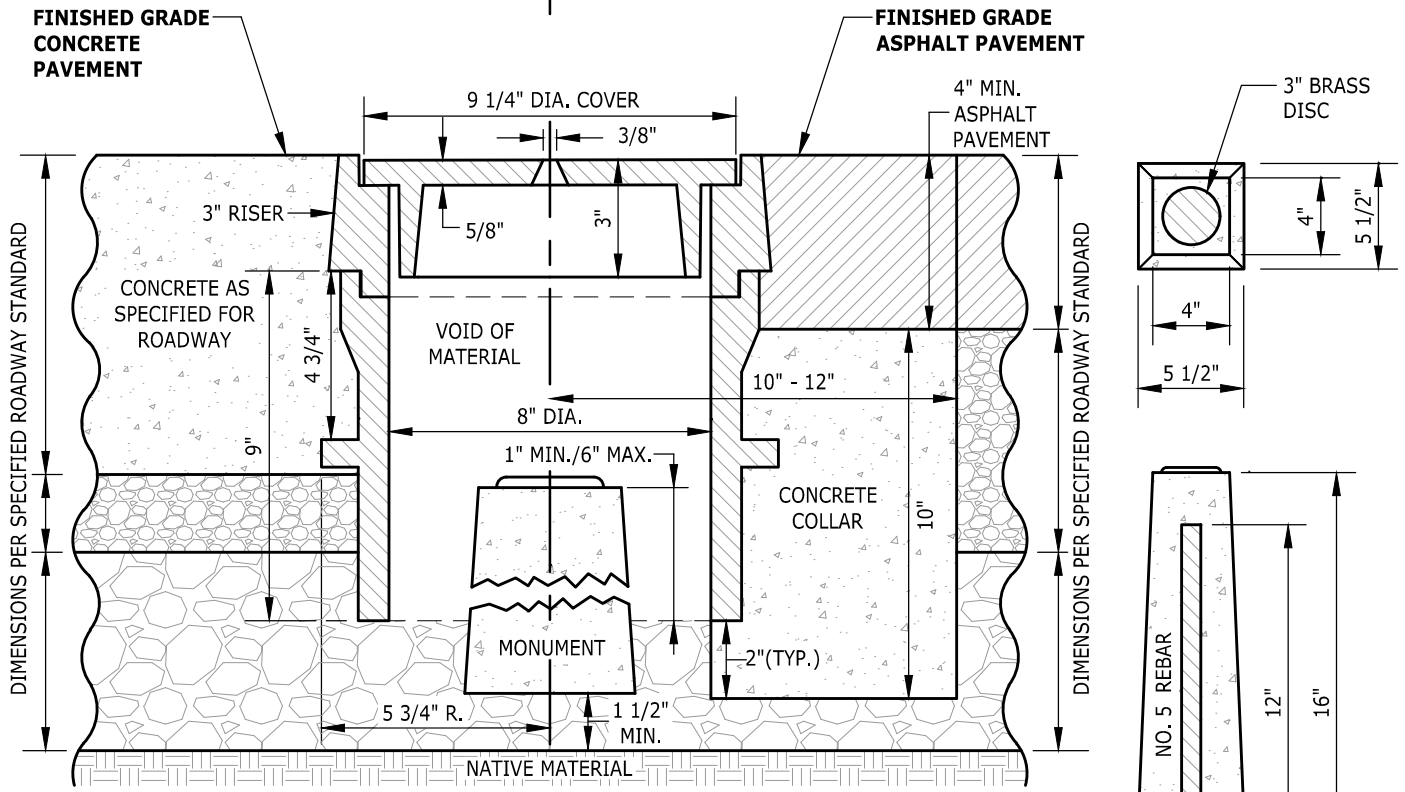


PLAN OF COVER

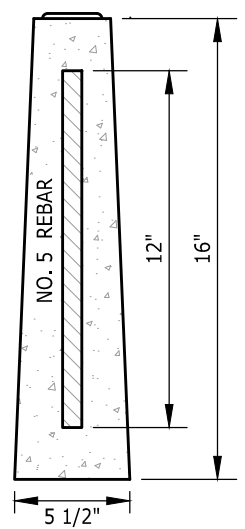
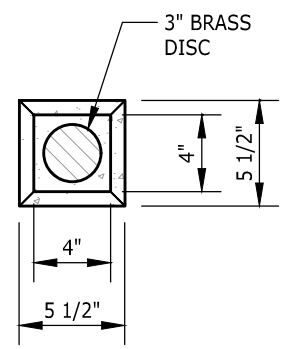
8" RISER RING DIMENSIONS			
A (SIZE)	1 3/8"	1 7/8"	2 7/8"



PLAN OF 8" DIA. RISER



SECTION



PLAN OF MONUMENT

NOTES:

1. MONUMENT CASE AND COVER - EAST JORDAN IRON WORKS, PART NO. 369505 OR PRE-APPROVED ALTERNATIVE.
2. MONUMENT CASE RISER - EAST JORDAN IRON WORKS, PART NO. 1 1/2" - 369590
2" - 369592
3" - 639594
OR PRE-APPROVED ALTERNATIVE.
3. MONUMENT POST - SHOPE CONCRETE PRODUCTS, PART NO. 104 OR PRE-APPROVE ALTERNATIVE.
4. THE CASTINGS SHALL BE GRAY-IRON CASTINGS, ASTM DESIGNATION A-48, CLASS 35B. THE COVER AND SEAT SHALL BE MACHINED SO AS TO HAVE PERFECT CONTACT AROUND THE ENTIRE CIRCUMFERENCE AND FULL WIDTH OF BEARING SURFACE.
5. CONCRETE SHALL BE A "COMMERCIAL CLASS" CONCRETE OR AS OTHERWISE SPECIFIED.
6. PAVEMENT SHALL BE AS SPECIFIED.
7. FOR ALTERNATE DIAMETER RISERS SEE KSP 6-72b.



NOTE: THIS PLAN IS NOT A LEGAL ENGINEERING DOCUMENT BUT AN ELECTRONIC DUPLICATE. THE ORIGINAL, SIGNED BY THE ENGINEER AND APPROVED FOR PUBLICATION IS KEPT ON FILE AT THE CITY OF KENT. A COPY MAY BE OBTAINED UPON REQUEST.

		CITY OF KENT ENGINEERING DEPARTMENT	
		STANDARD MONUMENT, MONUMENT CASE, COVER AND RISER	
DESIGNED: COK	SCALE: NONE	STANDARD PLAN	
DRAWN: COK	DATE: 12/2019	6-72a	
CHECKED: COK	ENGINEER		
APPROVED:			