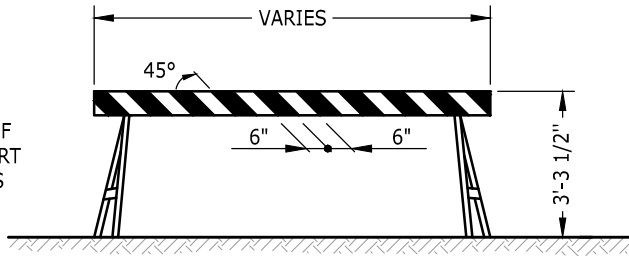
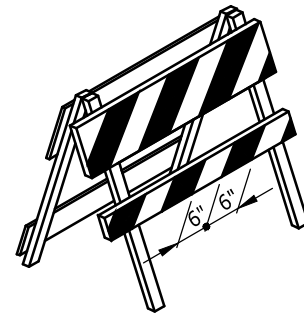


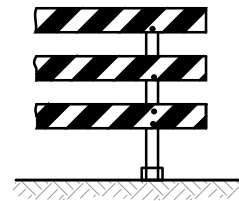
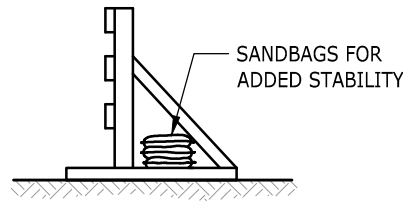
TYPE OF SUPPORT VARIES



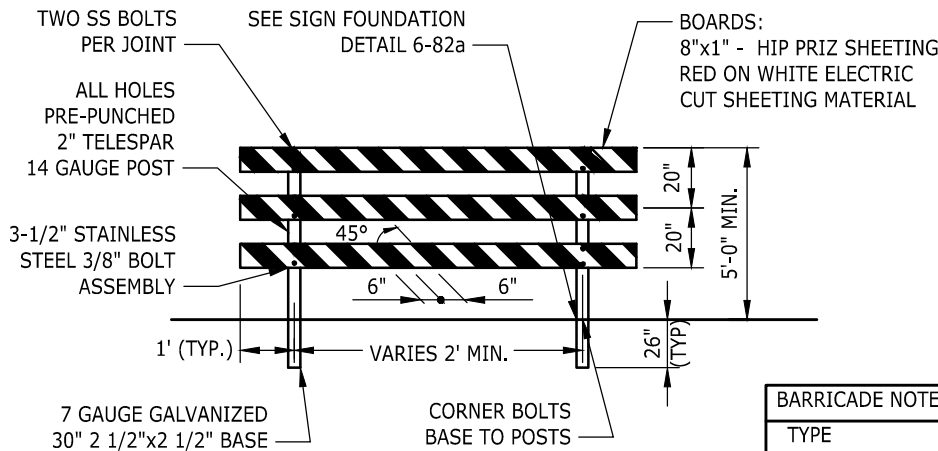
TYPE I BARRICADE



TYPE II BARRICADE



MOVABLE (TEMPORARY)
TYPE III BARRICADE



FIXED (PERMANENT)
TYPE III BARRICADE

NOTE:
SEE TABLE FOR
DIMENSIONS NOT SHOWN.

BARRICADE NOTES:			
TYPE	I	II	III
WIDTH OF RAIL	8" MIN. 12" MAX.	8" MIN. 12" MAX.	8" MIN. 12" MAX.
LENGTH OF RAIL	2' MIN.	2' MIN.	4' MIN.
HEIGHT	3' MIN.	3' MIN.	5' MIN.
TYPE OF FRAME	DEMOUNTABLE OR HEAVY "A"	LIGHT "A" FRAME	POST OR SKIDS
FLEXIBILITY	MOVABLE	PORTABLE	MOVABLE OR PERMANENT

STRIPE NOTES:

- RED & WHITE
- REFLECTORIZED
- SLANT DOWNWARD, RIGHT OR LEFT, IN DIRECTION TRAFFIC WILL PASS. SLANT BOTH DIRECTIONS FROM MIDDLE IF TRAFFIC PASSES BOTH ENDS. WIDTH 6" EXCEPT 4" IF RAILS ARE LESS THAN 3' LONG.
- SLANT DOWNWARD TO MIDDLE AT END OF CLOSED ROAD.

-SEE MUTCD SECTION 6F.63



NOTE: THIS PLAN IS NOT A LEGAL ENGINEERING DOCUMENT BUT AN ELECTRONIC DUPLICATE. THE ORIGINAL, SIGNED BY THE ENGINEER AND APPROVED FOR PUBLICATION IS KEPT ON FILE AT THE CITY OF KENT. A COPY MAY BE OBTAINED UPON REQUEST.

	CITY OF KENT ENGINEERING DEPARTMENT	
	ROADWAY BARRICADES SHEET 1 OF 2	
DESIGNED: COK DRAWN: COK CHECKED: COK	SCALE: NONE DATE: 7/2020 ENGINEER	STANDARD PLAN 6-71a
APPROVED:		