

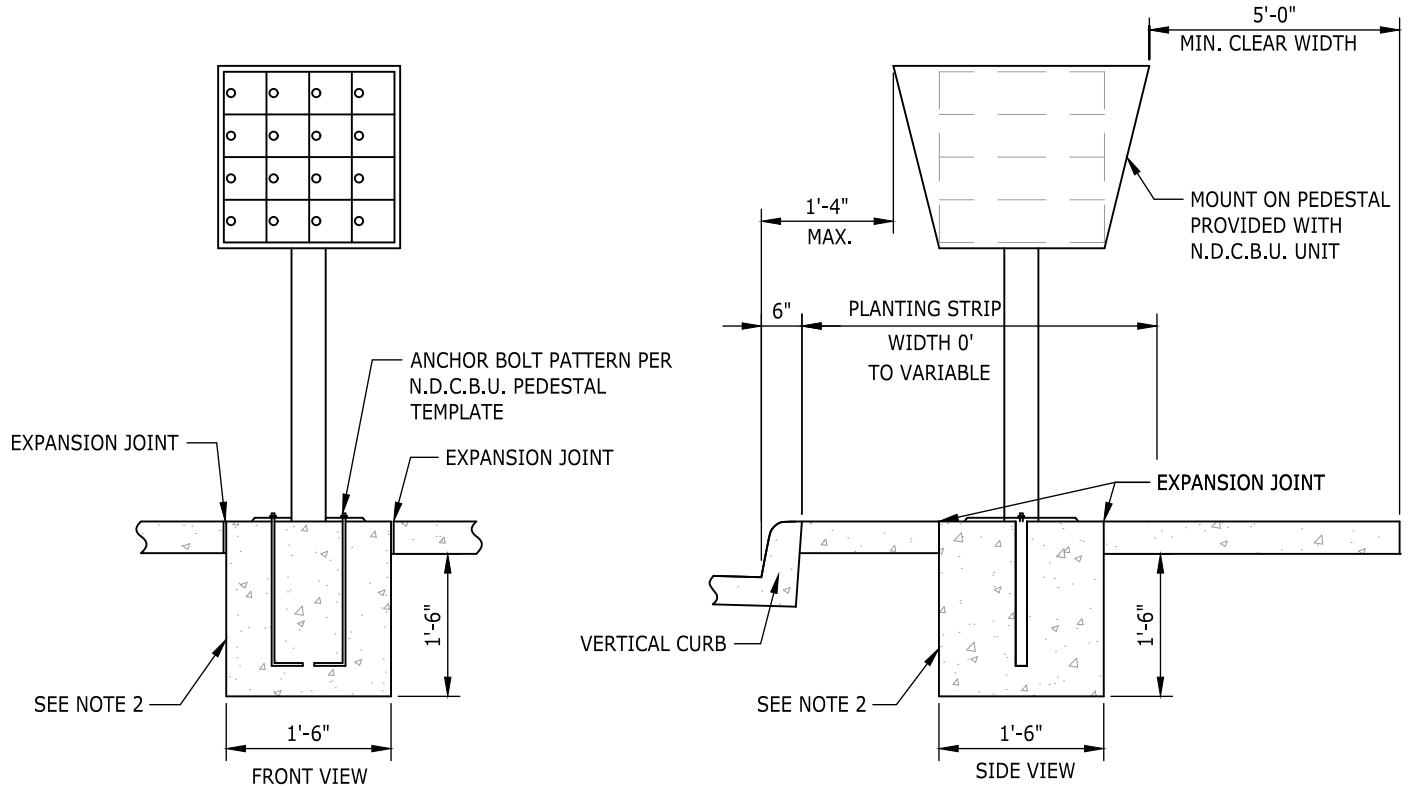
**NOTES:**

1. SEE STANDARD PLAN 6-40 FOR SIDEWALK REQUIREMENTS.
2. SEE WSDOT STANDARD PLAN H-70.20-00 FOR DETAILS.
3. ALL MAILBOX INSTALLATIONS SHALL MEET CURRENT ADA STANDARDS.

FRONT VIEW

SIDE VIEW

TYPE 2  
(MULTIPLE BOX INSTALLATION)



TYPE N.D.C.B.U. INSTALLATION

(NEIGHBORHOOD DELIVERY AND COLLECTION BOX UNIT)

**NOTES:**

1. THE POSTMASTER OR DESIGNATED SERVING POST OFFICE WILL DESIGNATE THE LOCATION AND MANNER OF GROUPING OF MAIL BOXES.
2. INSTALLATION OF N.D.C.B.U. (INCLUDING CONSTRUCTION OF BASE) SHALL BE COORDINATED WITH U.S. POSTAL SERVICE.
3. SEE STANDARD PLAN 6-34 FOR CURB AND SIDEWALK JOINTS.



NOTE: THIS PLAN IS NOT A LEGAL ENGINEERING DOCUMENT BUT AN ELECTRONIC DUPLICATE. THE ORIGINAL, SIGNED BY THE ENGINEER AND APPROVED FOR PUBLICATION IS KEPT ON FILE AT THE CITY OF KENT. A COPY MAY BE OBTAINED UPON REQUEST.

	<b>CITY OF KENT</b> ENGINEERING DEPARTMENT	
	<b>MAILBOX INSTALLATION</b> TYPE 2 SHEET 2 OF 3	
DESIGNED COK	SCALE NONE	STANDARD PLAN
DRAWN COK	DATE 9/2020	6-70b
CHECKED COK	ENGINEER	
APPROVED		