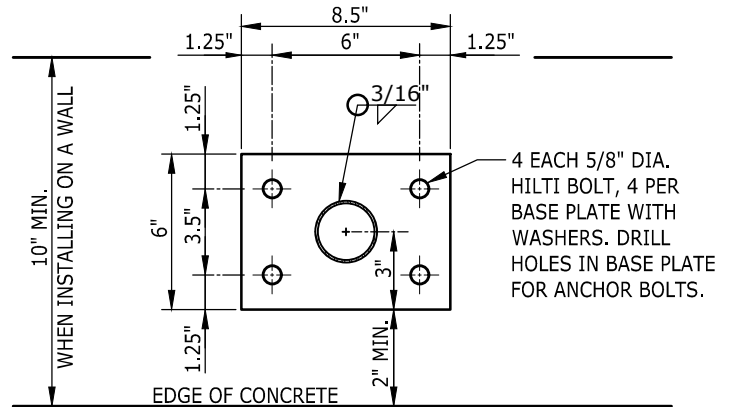
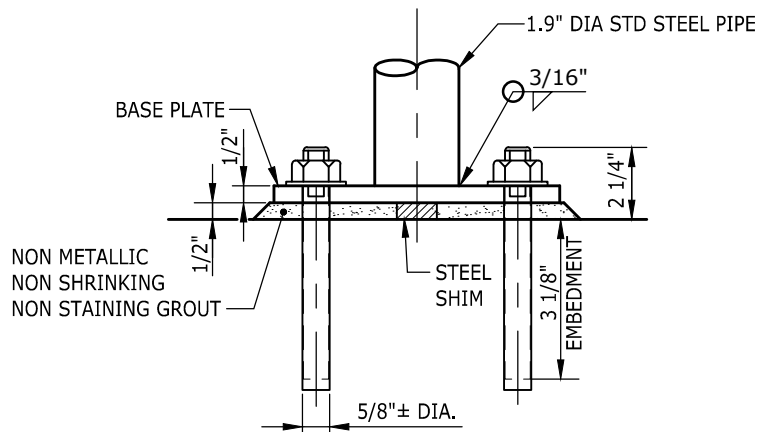


STRUCTURAL BASE PLATE NOTES:

1. ALL MATERIAL AND WORKMANSHIP SHALL BE IN ACCORDANCE WITH THE REQUIREMENTS OF THE LATEST WSDOT STANDARD SPECIFICATIONS FOR ROAD, BRIDGE AND MUNICIPAL CONSTRUCTION AND AMENDMENTS.
2. STRUCTURAL STEEL BASE PLATES SHALL BE IN ACCORDANCE WITH ASTM A36 WITH A MINIMUM YIELD STRENGTH OF 36,000 PSI.
3. ALL WELDING SHALL BE DONE IN ACCORDANCE WITH THE LATEST AWS STANDARDS.
4. USE LOW HYDROGEN E70XX ELECTRODES FOR ALL WELDING.
5. MINIMUM DESIGN BOLT LOAD PER ANCHOR BOLT = 3250 LBS. TENSION.
6. HORIZONTAL SHEAR IS LESS THAN 250 LBS PER BOLT AND MAY BE NEGLECTED.
7. SPECIAL INSPECTION IN ACCORDANCE WITH IBC SECTION 1701 IS REQUIRED FOR THE SUPPLY, THE CORE DRILLING AND THE INSTALLATION INSPECTION FOR ALL ANCHOR BOLTS.
8. ALL DRILLED IN PLACE ANCHOR BOLTS SHALL BE PROVIDED BY HILTI OR APPROVED EQUIVALENT.
9. SUBSTITUTIONS SHALL TAKE INTO ACCOUNT DISTANCE BETWEEN BOLTS IN THE BASE PLATE, THEIR EMBEDMENT IN THE CONCRETE DECK AND EDGE DISTANCE TO ATTAIN THIS MINIMUM BOLT LOAD.
10. ALL HILTI HOLES SHALL BE CORE DRILLED IN ACCORDANCE WITH HILTI REQUIREMENTS.
11. GROUT FOR SETTING THE ANCHOR PLATES ON SHALL BE: NON METALLIC, NON STAINING NON SHRINK GROUT (OR DRYPACK) WITH A MINIMUM 28 DAY STRENGTH OF 4000 PSI. MATCH EXISTING CONCRETE COLOR.
12. GALVANIZED STEEL ANCHOR BOLTS SIZE, SPACING AND EMBEDMENT PER HANDRAILING MANUFACTURER.
13. THE CONTRACTOR SHALL SUBMIT AN INSTALLATION PLAN TO THE ENGINEER FOR REVIEW PRIOR TO INSTALLATION.




BASE PLATE PLAN



BASE PLATE ELEVATION

NOTE: THIS PLAN IS NOT A LEGAL ENGINEERING DOCUMENT BUT AN ELECTRONIC DUPLICATE. THE ORIGINAL, SIGNED BY THE ENGINEER AND APPROVED FOR PUBLICATION IS KEPT ON FILE AT THE CITY OF KENT. A COPY MAY BE OBTAINED UPON REQUEST.



| | | | |
|--|---------------|--|--|
|  | | CITY OF KENT ENGINEERING DEPARTMENT | |
| | | PEDESTRIAN RAILING BASE PLATE DETAILS SHEET 3 OF 3 | |
| DESIGNED: COK | SCALE: NONE | STANDARD PLAN | |
| DRAWN: COK | DATE: 12/2019 | 6-41c | |
| CHECKED: COK | ENGINEER | | |
| APPROVED: | | | |