

NOTES:

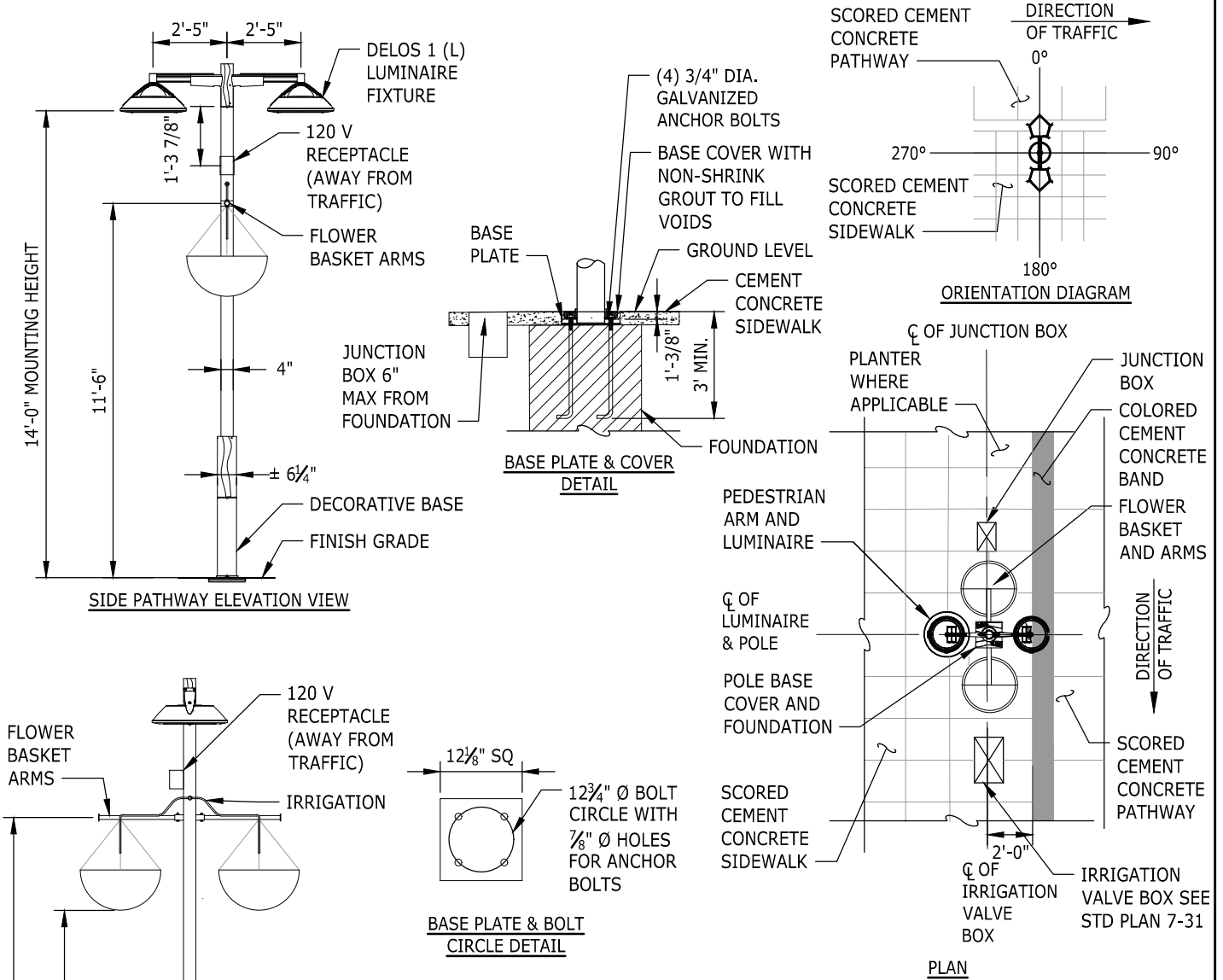
1. ORIENTATION LOCATIONS:
 - * HANDHOLE ACCESS DOOR SHALL BE MOUNTED AT 180°
 - * RECEPTACLE SHALL BE MOUNTED AT 90°
 - * CARFLEX CONDUIT, AND IRRIGATION HOLE SHALL BE MOUNTED AT 90° AND 270° AND APPLY TO STREETSCAPES EAST OF SR-167.
2. NEW AND EXISTING UTILITIES MUST BE SHOWN ON DEVELOPMENT PLANS WITH APPROPRIATE CLEARANCES. ANY FIELD ADJUSTMENTS MUST BE APPROVED BY CITY.
3. JUNCTION BOX LAYOUT, FOUNDATION SIZE AND REINFORCEMENT SHALL BE PER CITY OF KENT STANDARD PLAN 6-89.
4. IRRIGATION DETAILS AT POLE BASE SHALL BE PER CITY OF KENT STANDARD PLAN 7-30 & 7-31.

LUMINAIRE:

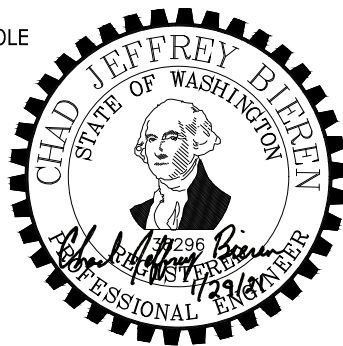
1. LUMINAIRE MANUFACTURER: AEC ILLUMINATION CORP - DELOS 1 LED STU-M 3.5-2M
2. ALUMINUM HOUSING WITH QUICK INSTALLATION SYSTEM (QIS)
3. LED, 3000K CCT, 525mA MAX DRIVE CURRENT, FLAT LENS

PEDESTRIAN LIGHTING:

1. LUMINAIRE ARM, BASE, AND POLE SHALL BE POLYESTER POWDER COAT SYSTEM BY TIGER DRYLAC, WITH ANTI-GRAFFITI PROPERTIES, RAL COLOR 7021 (SATIN FINISH), OR APPROVED EQUAL.
2. POLES SHALL BE HOT DIPPED GALVANIZED.
3. FLOWER BASKET ATTACHMENT SYSTEM AND ARMS PER FBA20-D-C PER MANUFACTURE, SHALL APPLY TO STREETSCAPES EAST OF SR-167.



NOTE: THIS PLAN IS NOT A LEGAL ENGINEERING DOCUMENT BUT AN ELECTRONIC DUPLICATE. THE ORIGINAL, SIGNED BY THE ENGINEER AND APPROVED FOR PUBLICATION IS KEPT ON FILE AT THE CITY OF KENT. A COPY MAY BE OBTAINED UPON REQUEST.



		CITY OF KENT ENGINEERING DEPARTMENT	
		MEEKER STREET DUAL PEDESTRIAN LUMINAIRE AND POLE	
DESIGNED: COK	SCALE: NONE	STANDARD PLAN	
DRAWN: COK	DATE: 8/2020		
CHECKED: COK	ENGINEER		
APPROVED:		7-24	