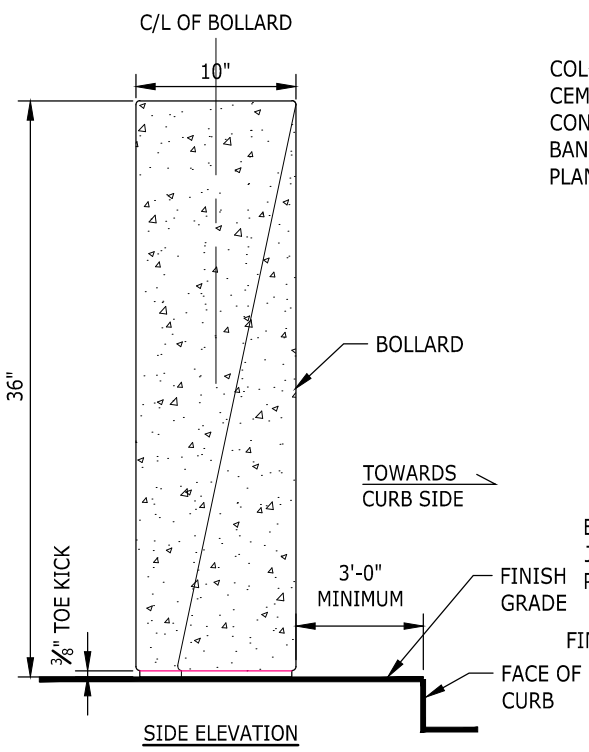
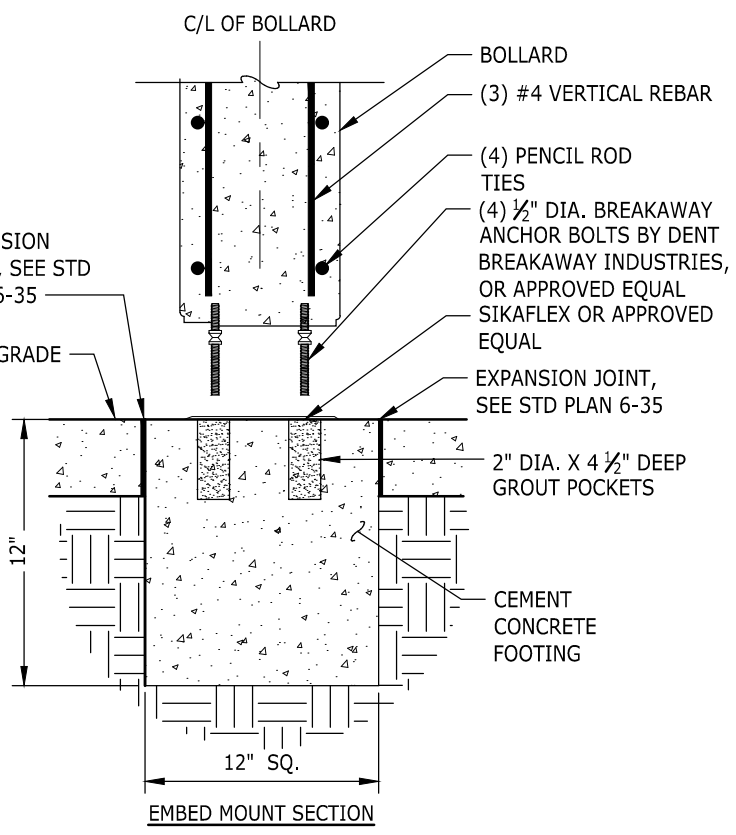


LAYOUT PLAN (SOUTH SIDE AT STREETSCAPE TYPE A & B)



SIDE ELEVATION



EMBED MOUNT SECTION

NOTES:

1. CONCRETE BOLLARD SHALL BE "SHEAR" PRECAST BOLLARD Q-SHR-B, BY QCP QUICKCRETE PRODUCTS, OR APPROVED EQUAL.
2. PRECAST CONCRETE SHALL BE SLATE GRAY WITH EXPOSED ETCHED FINISH AND ANTI-GRAFFITI COATING.
3. EMBED MOUNT SHALL BE PLUMB AND INSTALLED PER MANUFACTURER INSTRUCTIONS.
4. ALL EDGES SHALL BE EASED.
5. MANUFACTURING TOLERANCES SHALL BE $\pm 1/4"$.
6. APPLIES TO AMENITY ZONES ON SOUTH SIDE AT STREETSCAPE TYPE A AND B.
7. CONCRETE BOLLARDS SHALL BE 6' MIN FROM CENTERLINE OF BOLLARD TO EDGE OF STREETSCAPE ELEMENTS, PLANTERS AND ILLUMINATION POLES.



NOTE: THIS PLAN IS NOT A LEGAL ENGINEERING DOCUMENT BUT AN ELECTRONIC DUPLICATE. THE ORIGINAL, SIGNED BY THE ENGINEER AND APPROVED FOR PUBLICATION IS KEPT ON FILE AT THE CITY OF KENT. A COPY MAY BE OBTAINED UPON REQUEST.

		CITY OF KENT ENGINEERING DEPARTMENT	
		MEEKER STREET CONCRETE BOLLARD	
DESIGNED	COK	SCALE	NONE
DRAWN	COK	DATE	8/2020
CHECKED	COK	ENGINEER	
APPROVED		7-9	