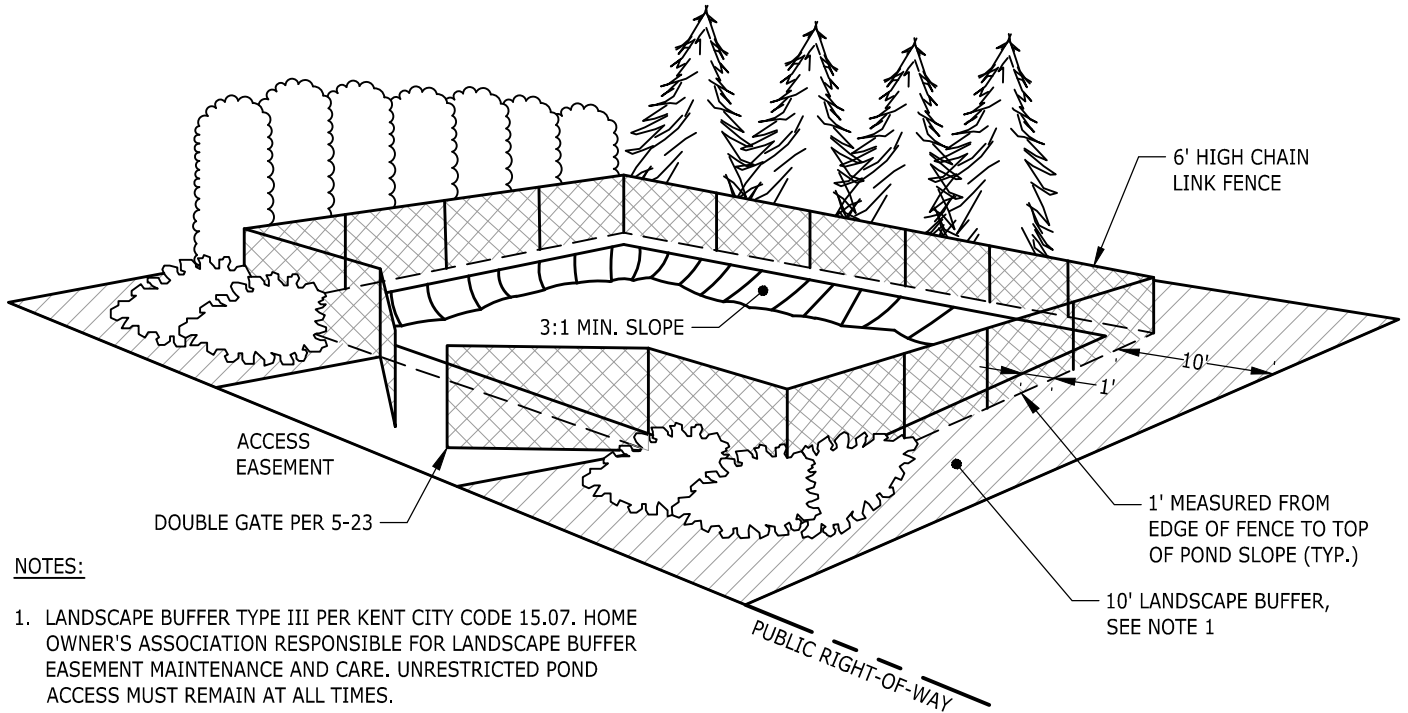
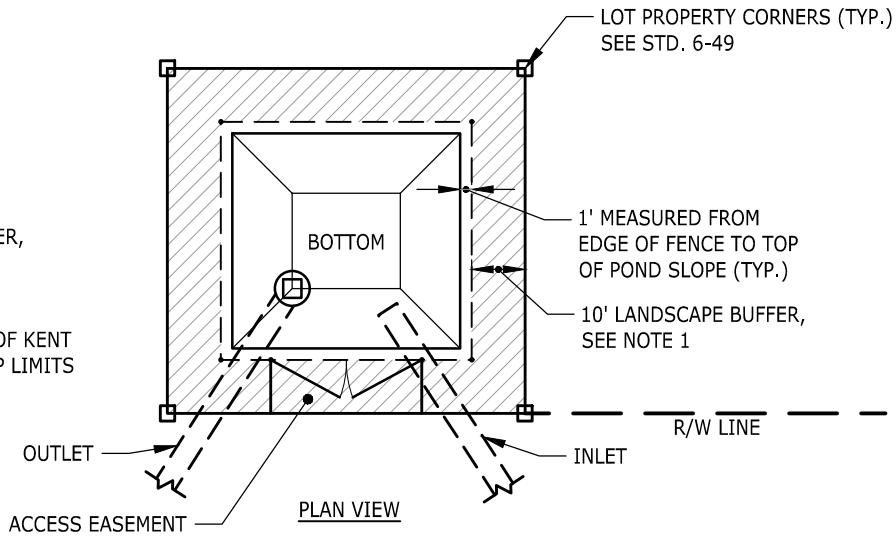
 LANDSCAPE BUFFER, SEE NOTE 1

--- FENCE AND CITY OF KENT POND OWNERSHIP LIMITS




NOTES:

1. LANDSCAPE BUFFER TYPE III PER KENT CITY CODE 15.07. HOME OWNER'S ASSOCIATION RESPONSIBLE FOR LANDSCAPE BUFFER EASEMENT MAINTENANCE AND CARE. UNRESTRICTED POND ACCESS MUST REMAIN AT ALL TIMES.
2. THE PERIMETER OF ALL STORMWATER DETENTION PONDS SHALL BE LANDSCAPED TO A MINIMUM DEPTH OF 10' OF TYPE II LANDSCAPING. IF PERIMETER FENCING IS REQUIRED BASED ON PUBLIC WORKS STANDARDS, IT SHALL BE CONSTRUCTED OF VINYL-COATED CHAINLINK OR SOLID SCREEN FENCING. THE FENCING SHALL BE LOCATED BETWEEN THE POND AND THE LANDSCAPE AREA.
3. INSTALL STORMWATER SIGN PER KENT STANDARD PLAN 5-40,

NOTE: THIS PLAN IS NOT A LEGAL ENGINEERING DOCUMENT BUT AN ELECTRONIC DUPLICATE. THE ORIGINAL, SIGNED BY THE ENGINEER AND APPROVED FOR PUBLICATION IS KEPT ON FILE AT THE CITY OF KENT. A COPY MAY BE OBTAINED UPON REQUEST.



		CITY OF KENT ENGINEERING DEPARTMENT	
		POND ILLUSTRATION	
DESIGNED: COK	SCALE: NONE	STANDARD PLAN	
DRAWN: COK	DATE: 9/2020	5-36	
CHECKED: COK	ENGINEER		
APPROVED:			