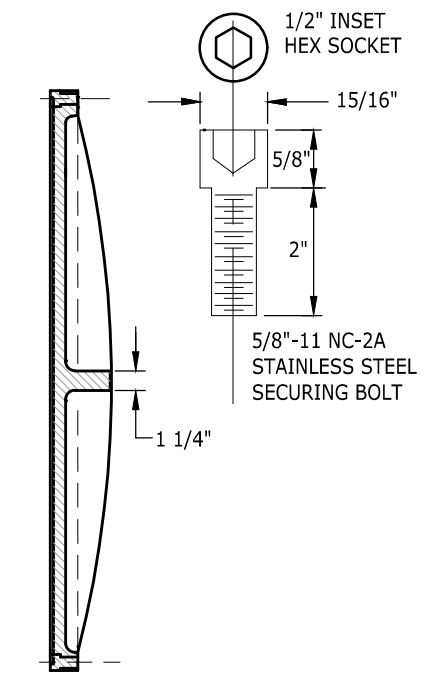
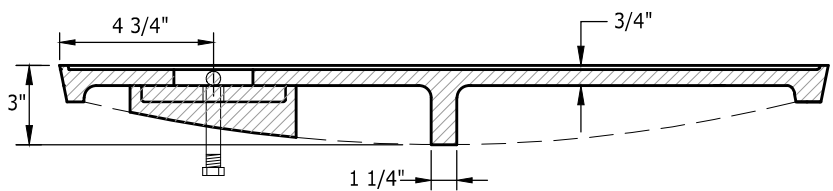


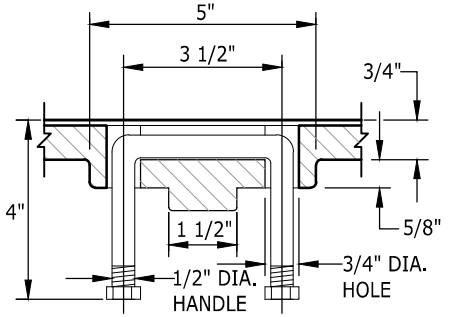
PLAN



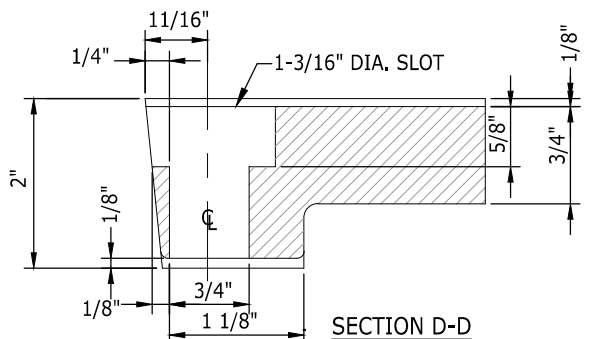
SECTION B-B



SECTION A-A



SECTION C-C




SECTION D-D

NOTES:

1. WHEN SPECIFIED ON THE APPROVED PLANS, THE SOLID METAL COVER FOR CATCH BASIN SHALL BE FURNISHED IN PLACE OF A 20"X24" GRATE.
2. RAISED DESIGNS OTHER THAN THE DIAMOND DESIGN SHOWN HEREON MAY BE USED IF APPROVED BY THE ENGINEER. COVERS IN WALKWAYS SHALL BE NON-SLIP.
3. CAST IN THE LETTERS "DRAIN" IN 2" RAISED LETTERS, 1/8" HIGH.
4. TO BE USED WITH FRAME SHOWN IN STANDARD PLAN 5-4.
5. PROVIDE 2-5/8" DIAMETER STAINLESS STEEL ALLEN TYPE BOLTS COUNTER SUNK FLUSH WITH COVER. (SEE STANDARD PLAN 5-4 FOR BOLT-DOWN CATCH BASIN FRAME).
6. FRAME: CAST IRON ASTM A48 CL30, COVER: DUCTILE IRON ASTM A 536 GR 80-55-06 H-20 RATED.

NOTE: THIS PLAN IS NOT A LEGAL ENGINEERING DOCUMENT BUT AN ELECTRONIC DUPLICATE. THE ORIGINAL, SIGNED BY THE ENGINEER AND APPROVED FOR PUBLICATION IS KEPT ON FILE AT THE CITY OF KENT. A COPY MAY BE OBTAINED UPON REQUEST.



		CITY OF KENT ENGINEERING DEPARTMENT	
		20"x 24" SOLID CATCH BASIN COVER	
DESIGNED <u>COK</u>	SCALE <u>NONE</u>	STANDARD PLAN	
DRAWN <u>COK</u>	DATE <u>12/2019</u>	<div style="font-size: 24pt; font-weight: bold;">5-9</div>	
CHECKED <u>COK</u>	ENGINEER		
APPROVED			