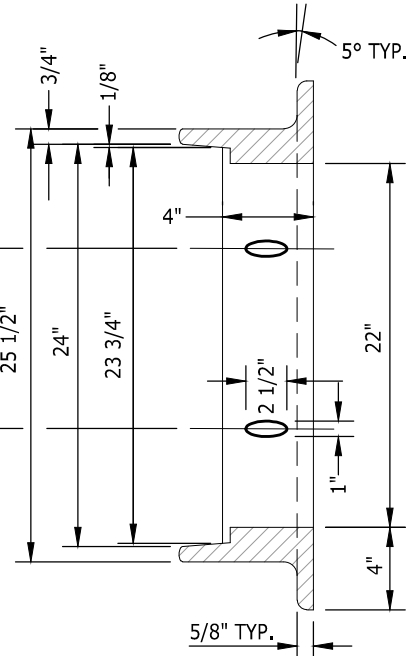


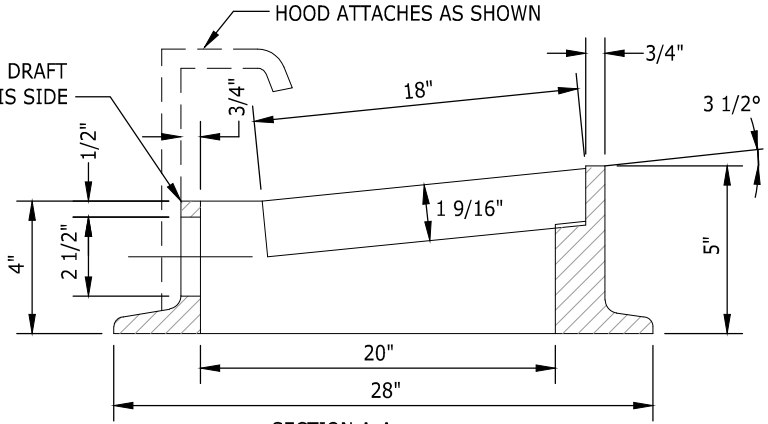
PLAN VIEW

DRILL & TAP TWO 5/8"-11 NC HOLES THRU FRAME

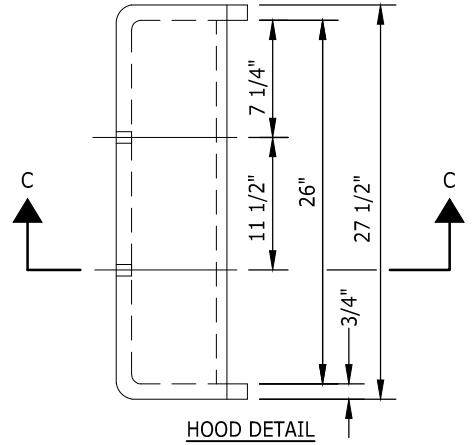


SECTION B-B

MIN. DRAFT ON THIS SIDE



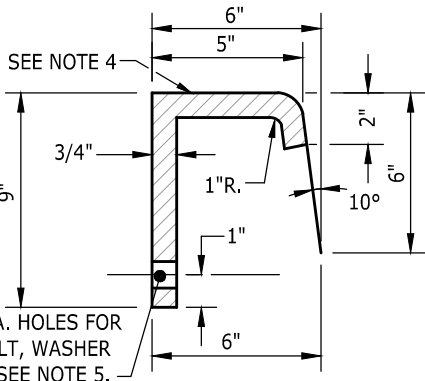
SECTION A-A



HOOD DETAIL

NOTES:

1. FRAME AND HOOD CAST IRON ASTM A48 CL30 H-20 LOADING.
2. USE 18"x24" VANED GRATE.
3. AT LOW POINTS, USE 18"x24" 2-WAY VANED GRATE.
4. HOOD SHALL BE NON-SLIP.
5. BOLT, WASHER AND NUT SHALL BE GALVANIZED OR CORROSION RESISTANT.
6. THRU-CURB FRAME LOCATIONS SHALL BE TWENTY-FIVE (25) FEET AWAY FROM ANY P.C. OR P.T. OF CURB RADII.



SECTION C-C

2-1" DIA. HOLES FOR 3/4" BOLT, WASHER & NUT, SEE NOTE 5.

NOTE: THIS PLAN IS NOT A LEGAL ENGINEERING DOCUMENT BUT AN ELECTRONIC DUPLICATE. THE ORIGINAL, SIGNED BY THE ENGINEER AND APPROVED FOR PUBLICATION IS KEPT ON FILE AT THE CITY OF KENT. A COPY MAY BE OBTAINED UPON REQUEST.



	<b>CITY OF KENT</b> ENGINEERING DEPARTMENT	
	<b>THROUGH-CURB INLET FRAME</b>	
DESIGNED <u>COK</u>	SCALE <u>NONE</u>	STANDARD PLAN
DRAWN <u>COK</u>	DATE <u>2/2020</u>	<b>5-7a</b>
CHECKED <u>COK</u>	ENGINEER	
APPROVED _____		