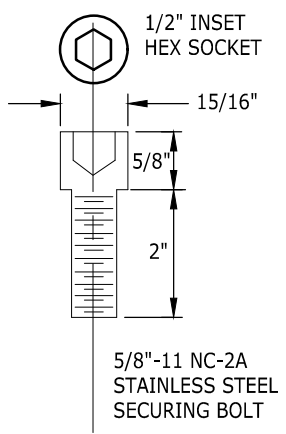
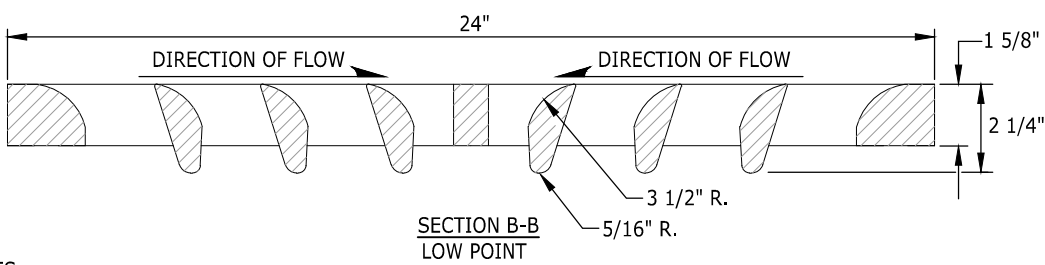
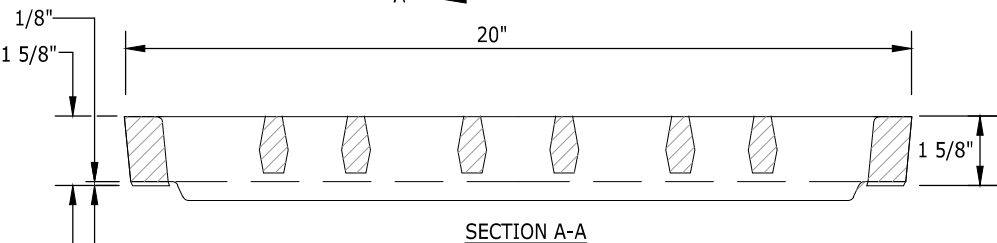


**SLOT DETAIL**  
 SLOT FORMED AND RECESSED FOR 5/8" - 11 NC x 2" S.S. SOCKET HEAD (ALLEN HEAD) CAP SCREW.



**NOTES:**

1. PROVIDE FRAME SHOWN ON STANDARD PLAN 5-4.
2. FOR THRU CURB INLETS AT LOW POINTS, USE BI-DIRECTIONAL VANED GRATE.
3. GRATE SHALL BE STAMPED "DUMP NO POLLUTANTS", "OUTFALL TO STREAM".
4. ALL LETTERING SHOWN SHALL BE 1/2" AND SHALL BE RECESSED.
5. DUCTILE IRON ASTM A-536 GRADE 80-55-06 H-20 RATED.
6. GRATE SHALL BE LOCKING.
7. PROVIDE 2-5/8" DIAMETER STAINLESS STEEL ALLEN TYPE BOLTS COUNTER SUNK FLUSH WITH COVER.



NOTE: THIS PLAN IS NOT A LEGAL ENGINEERING DOCUMENT BUT AN ELECTRONIC DUPLICATE. THE ORIGINAL, SIGNED BY THE ENGINEER AND APPROVED FOR PUBLICATION IS KEPT ON FILE AT THE CITY OF KENT. A COPY MAY BE OBTAINED UPON REQUEST.

		<b>CITY OF KENT</b> ENGINEERING DEPARTMENT	
		<b>20"x24"</b> <b>BI-DIRECTIONAL VANED GRATE</b>	
DESIGNED <u>COK</u>	SCALE <u>NONE</u>	STANDARD PLAN	
DRAWN <u>COK</u>	DATE <u>12/2019</u>	<b>5-6</b>	
CHECKED <u>COK</u>	ENGINEER		
APPROVED _____			