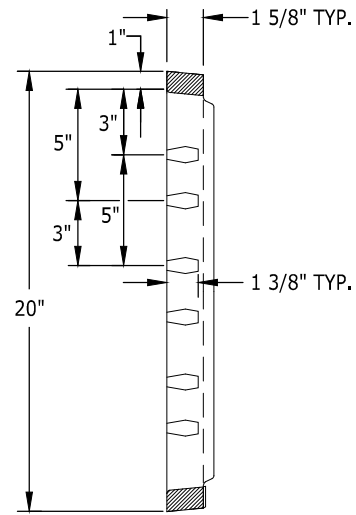
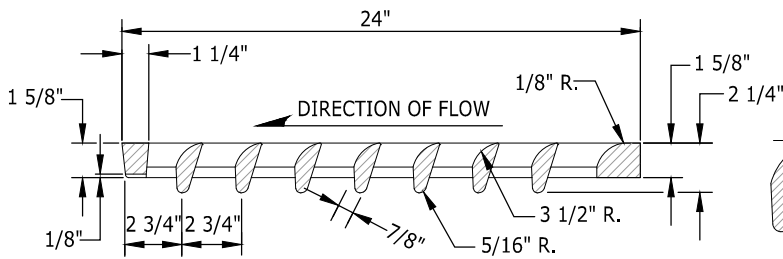


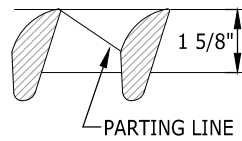
TOP VIEW



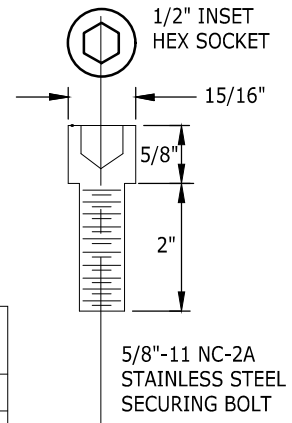
END VIEW



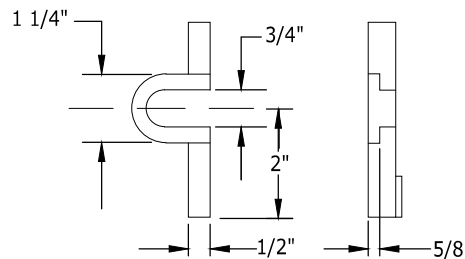
FRONT VIEW



VANE DETAIL



5/8"-11 NC-2A
STAINLESS STEEL
SECURING BOLT



SLOT DETAIL

SLOT FORMED AND RECESSED FOR 5/8" - 11 NC x 2"
S.S. SOCKET HEAD (ALLEN HEAD) CAP SCREW.

NOTES:

1. PROVIDE FRAME SHOWN IN STANDARD PLAN 5-4.
2. PROVIDE 2-5/8" DIAMETER STAINLESS STEEL ALLEN TYPE BOLTS COUNTER SUNK FLUSH WITH COVER.
3. GRATE SHALL BE STAMPED "DUMP NO POLLUTANTS", "OUTFALL TO STREAM".
4. ALL LETTERING SHOWN SHALL BE 1/2" AND SHALL BE RECESSED UNLESS OTHERWISE INDICATED.
5. DUCTILE IRON ASTM A-536 GRADE 80-55-06 H-20 RATED.
6. GRATE SHALL BE LOCKING.
7. BI-DIRECTIONAL VANED GRATES ARE REQUIRED WHEN LOCATED IN A LOW-SPOT.

NOTE: THIS PLAN IS NOT A LEGAL ENGINEERING DOCUMENT BUT AN ELECTRONIC DUPLICATE. THE ORIGINAL, SIGNED BY THE ENGINEER AND APPROVED FOR PUBLICATION IS KEPT ON FILE AT THE CITY OF KENT. A COPY MAY BE OBTAINED UPON REQUEST.



		CITY OF KENT ENGINEERING DEPARTMENT	
		20" x 24" VANED GRATE	
DESIGNED <u>COK</u>	SCALE <u>NONE</u>	STANDARD PLAN	
DRAWN <u>COK</u>	DATE <u>12/2019</u>	5-5	
CHECKED <u>COK</u>	ENGINEER		
APPROVED _____			