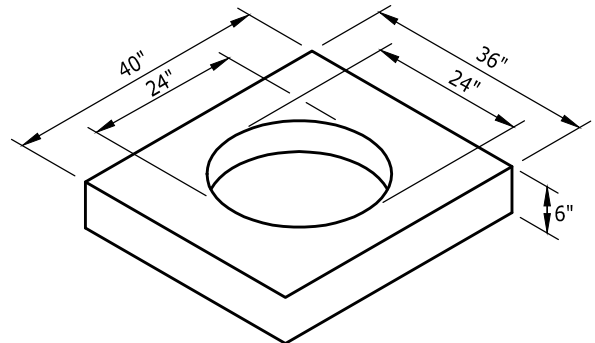
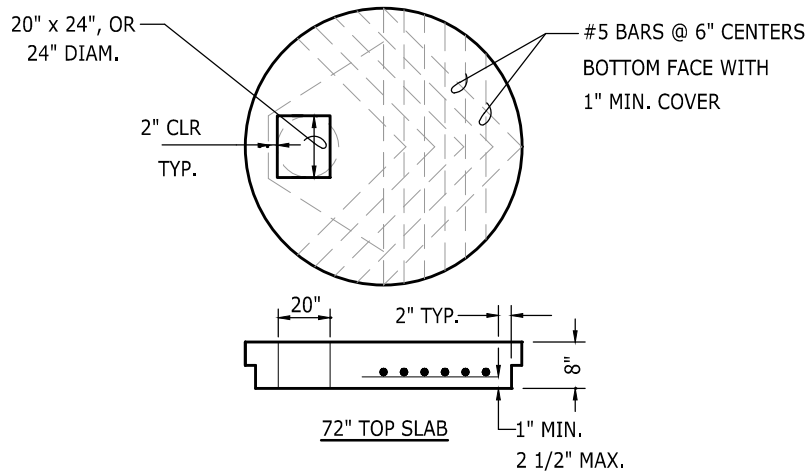
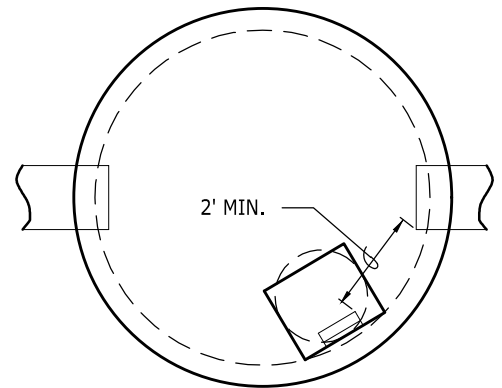
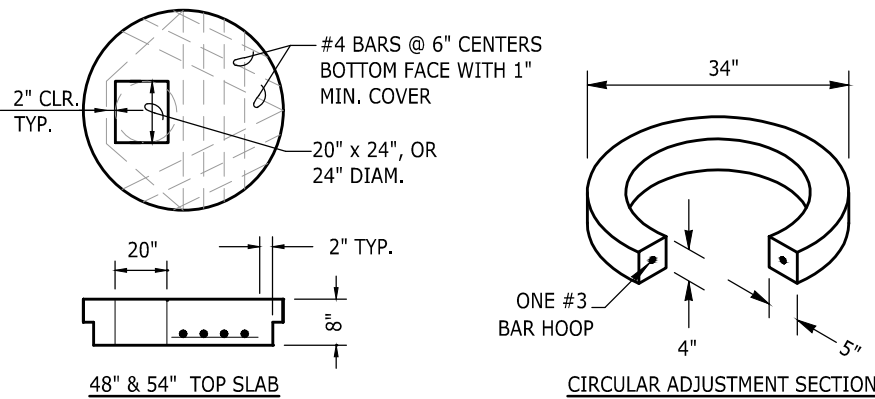


AS AN ACCEPTABLE ALTERNATIVE TO REBAR, WIRE MESH HAVING A MINIMUM AREA OF 0.12 SQUARE INCHES PER FOOT MAY BE USED FOR ADJUSTMENT SECTIONS.

RECTANGULAR ADJUSTMENT SECTION



CONVERSION RISER



TYPICAL ORIENTATION  
FOR ACCESS AND STEPS

NOTES:

1. SLAB OPENING SHALL BE 24" X 20" FOR RECTANGULAR AND 24" DIAMETER FOR ROUND.
2. SEE STANDARD PLAN 4-5 FOR STEP, LADDER AND GRADE RING.
3. ONLY ONE STYLE OF CATCH BASIN STEPS MAY BE USED IN A CATCH BASIN. DO NOT MIX STYLES.



NOTE: THIS PLAN IS NOT A LEGAL ENGINEERING DOCUMENT BUT AN ELECTRONIC DUPLICATE. THE ORIGINAL, SIGNED BY THE ENGINEER AND APPROVED FOR PUBLICATION IS KEPT ON FILE AT THE CITY OF KENT. A COPY MAY BE OBTAINED UPON REQUEST.

		<b>CITY OF KENT</b> ENGINEERING DEPARTMENT	
		<b>MISC. DETAILS FOR DRAINAGE STRUCTURES</b>	
DESIGNED <u>COK</u>	SCALE <u>NONE</u>	STANDARD PLAN	
DRAWN <u>COK</u>	DATE <u>12/2019</u>	<b>5-3</b>	
CHECKED <u>COK</u>	ENGINEER		
APPROVED			