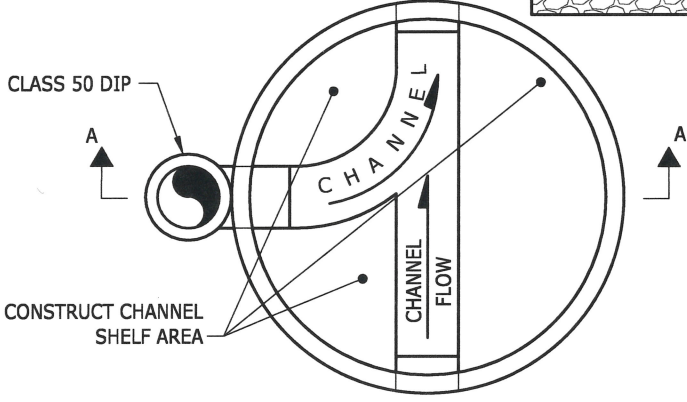


**ELEVATION SECTION A-A**



**CHANNEL PLAN VIEW**

**NOTES:**

1. OUTSIDE DROPS MUST BE CONSTRUCTED WITH DUCTILE IRON AS SHOWN; CONCRETE ENCASED PVC IS NOT ACCEPTABLE.
2. USE RESTRAINED FITTINGS AT ALL DROP CONNECTION POINTS.
3. SNUG RETAINER GLAND AS CLOSE TO MANHOLE FACE AS PRACTICAL.
4. IF DROP HEIGHT IS LESS THAN 2', A DROP CONNECTION IS NOT ALLOWED.



NOTE: THIS PLAN IS NOT A LEGAL ENGINEERING DOCUMENT BUT AN ELECTRONIC DUPLICATE. THE ORIGINAL, SIGNED BY THE ENGINEER AND APPROVED FOR PUBLICATION IS KEPT ON FILE AT THE CITY OF KENT. A COPY MAY BE OBTAINED UPON REQUEST.

		<b>CITY OF KENT</b> ENGINEERING DEPARTMENT	
		<b>DUCTILE IRON DROP CONNECTION</b>	
DESIGNED COK	SCALE NONE	STANDARD PLAN	
DRAWN COK	DATE 08/2023		
CHECKED COK	ENGINEER	<b>4-6</b>	
APPROVED <i>Chad Bierman</i>			