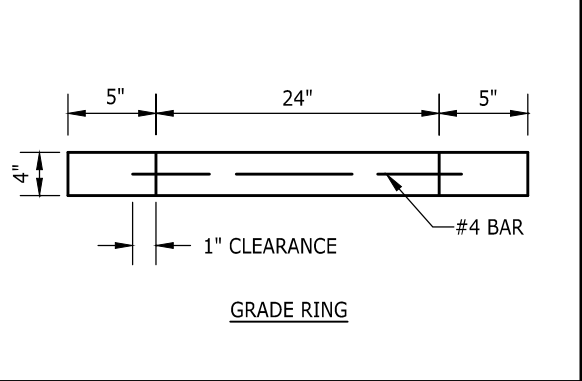


NOTES:

1. MANHOLE STEPS CONFORMING TO SECTION R, ASTM C-478. AASHTO M-199 REQUIREMENTS AND REQUIREMENTS OF ASTM D-4101 FOR POLYPROPYLENE AND ASTM A-615 FOR 1/2" GRADE 60 DEFORMED REINFORCING BAR FOR POLYPROPYLENE STEPS, AND ALL WISHA AND OSHA SPECIFICATIONS, ARE ACCEPTABLE PROVIDED THEY ARE PRE-APPROVED BY THE ENGINEER.
2. PREFABRICATED LADDERS ARE TO BE #7 GALVANIZED SMOOTH STEEL.
3. MANHOLE PREFABRICATED LADDER STEPS SHALL BE PARALLEL OR APPROXIMATELY RADIAL AT THE OPTION OF THE MANUFACTURER, EXCEPT THAT ALL STEPS IN ANY MANHOLE SHALL BE THE SAME.
4. PENETRATION OF OUTER WALL BY A STEP LADDER OR LADDER LEG IS PROHIBITED. USE FLANGED END FOR BOLTING TO WALL.
5. EMBED FOOT OF GALVANIZED PREFABRICATED LADDER IN CONCRETE IN POURED OR CHANNELED FLOOR.
6. MANHOLE STEPS OR LADDERS ARE NOT REQUIRED WHEN THE COVER TO BOTTOM OF MANHOLE IS LESS THAN 4'.



NOTE: THIS PLAN IS NOT A LEGAL ENGINEERING DOCUMENT BUT AN ELECTRONIC DUPLICATE. THE ORIGINAL, SIGNED BY THE ENGINEER AND APPROVED FOR PUBLICATION IS KEPT ON FILE AT THE CITY OF KENT. A COPY MAY BE OBTAINED UPON REQUEST.



		CITY OF KENT ENGINEERING DEPARTMENT	
		MANHOLE GRADE RING, SAFETY STEPS & LADDER	
DESIGNED: COK	SCALE: NONE	STANDARD PLAN	
DRAWN: COK	DATE: 12/2019	4-5	
CHECKED: COK	ENGINEER		
APPROVED:			