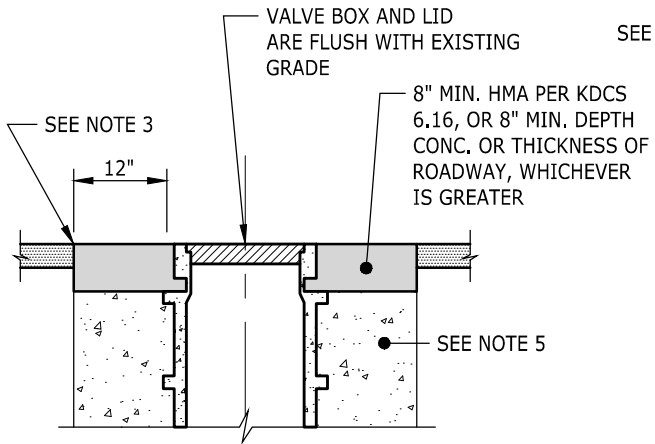
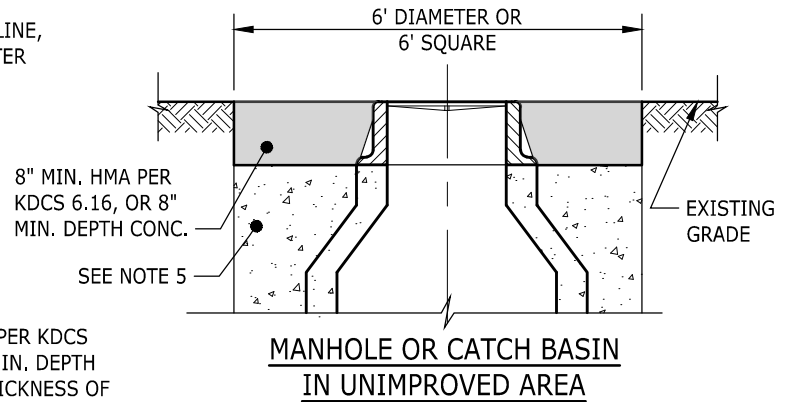
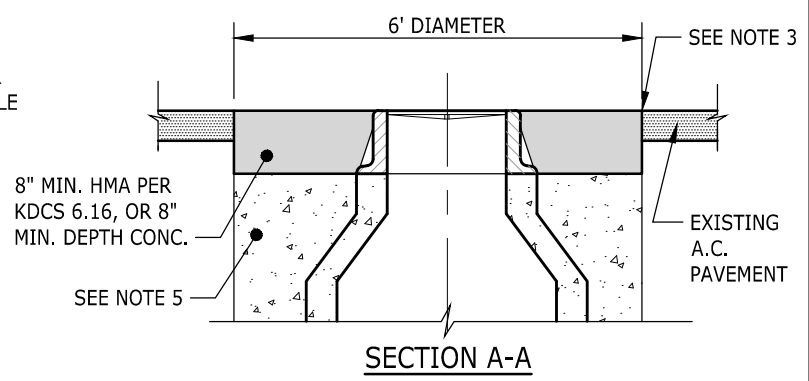
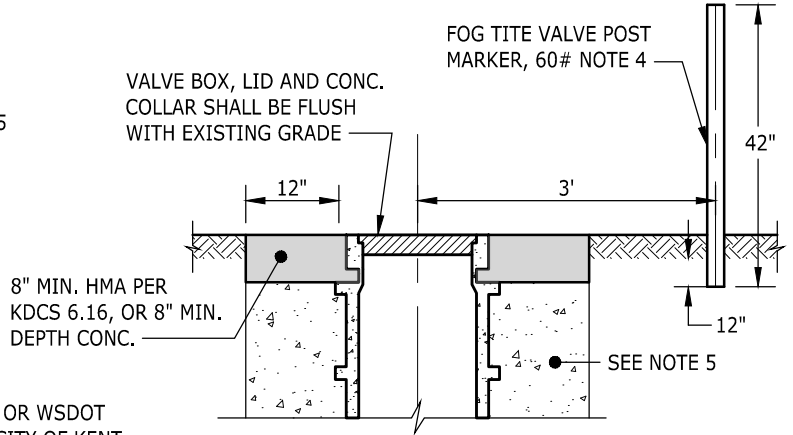


TYPICAL PLAN VIEW OF MANHOLE (OR CB) IN ASPHALT AREA



VALVE BOX IN ASPHALT AREA

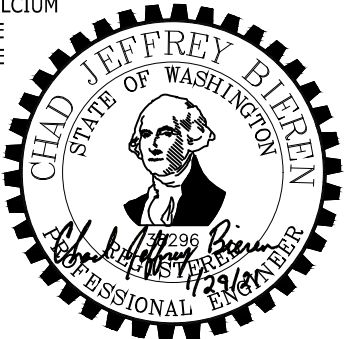


VALVE BOX IN UNIMPROVED AREA

NOTES:

1. ADJUSTMENT OF UTILITY STRUCTURES SHALL BE PER KENT OR WSDOT SPECIAL PROVISION SECTION 7-05.3(1), AS DIRECTED BY CITY OF KENT.
2. ALL ADJUSTMENTS SHALL BE COMPLETED AFTER FINISHED PAVING.
3. SURFACE SEAL AT MATCHLINE SHALL BE AR-4000.
4. VALVE IN UNIMPROVED AREAS SHALL HAVE A MARKER.
5. FILL ANY VOIDS OR DISTURBED AREAS BELOW CASTING WITH QUICK SETTING CEMENT CONCRETE. NO CALCIUM ACCELERANT PERMITTED. CONCRETE SHALL EXTEND A MIN. OF 2" ABOVE CASTING FLANGE.

NOTE: THIS PLAN IS NOT A LEGAL ENGINEERING DOCUMENT BUT AN ELECTRONIC DUPLICATE. THE ORIGINAL, SIGNED BY THE ENGINEER AND APPROVED FOR PUBLICATION IS KEPT ON FILE AT THE CITY OF KENT. A COPY MAY BE OBTAINED UPON REQUEST.



		CITY OF KENT ENGINEERING DEPARTMENT	
		ADJUSTMENT OF NEW AND EXISTING UTILITY STRUCTURES TO FINISH GRADE	
DESIGNED <u>COK</u>	SCALE <u>NONE</u>	STANDARD PLAN	
DRAWN <u>COK</u>	DATE <u>12/2019</u>	4-13	
CHECKED <u>COK</u>	ENGINEER		
APPROVED _____			