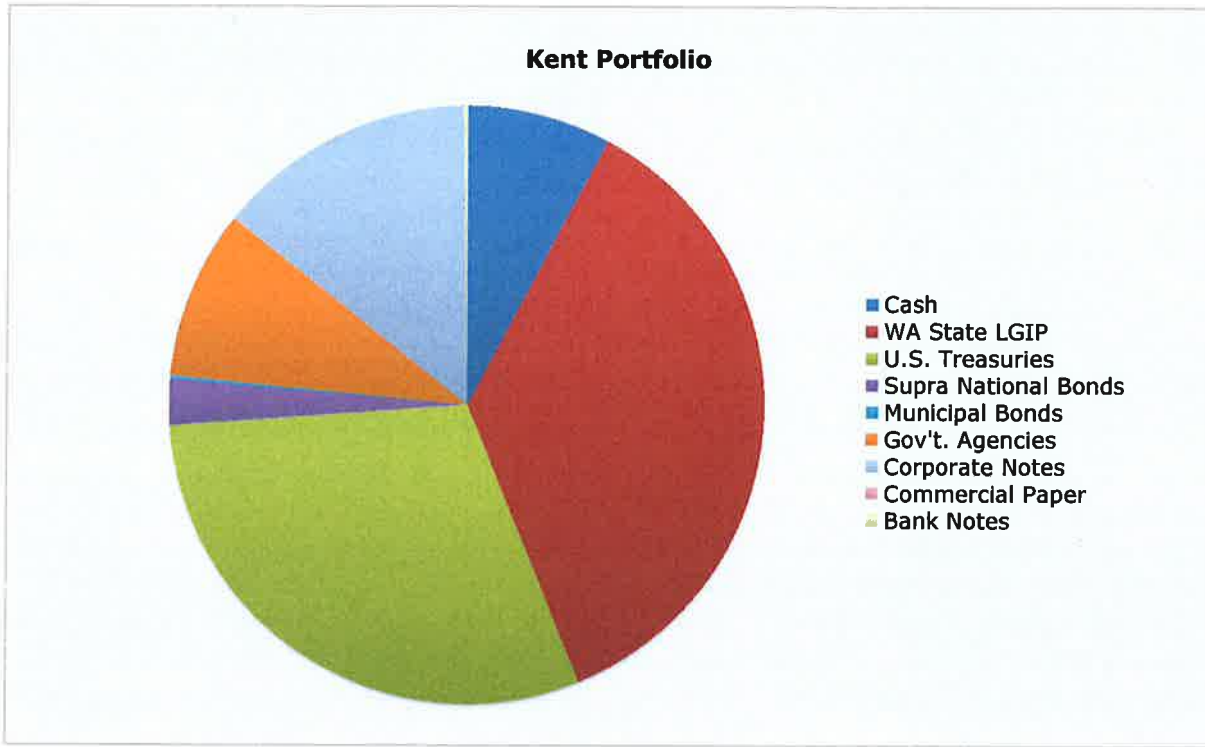


**CITY OF KENT  
INVESTMENT PORTFOLIO  
March 31, 2019**

<b>Purchase Date</b>	<b>Investment Description</b>	<b>Yield</b>	<b>Maturity</b>	<b>Market Value 12/31/2018</b>	<b>Investment Total</b>
03/31/19	Cash - US Bank	2.500%	Overnight	16,551,825	16,551,825
03/31/19	WA State LGIP	2.523%	Overnight	75,160,710	75,160,710
03/31/19	PFM Managed Portfolio	2.600%	1003 Days	119,802,623	118,967,853
				<b>211,515,158</b>	<b>210,680,388</b>



PFM initiated 10 investment trades in the 1st quarter of 2019.

The PFM managed portfolio held 104 investments at 03/31/2019.

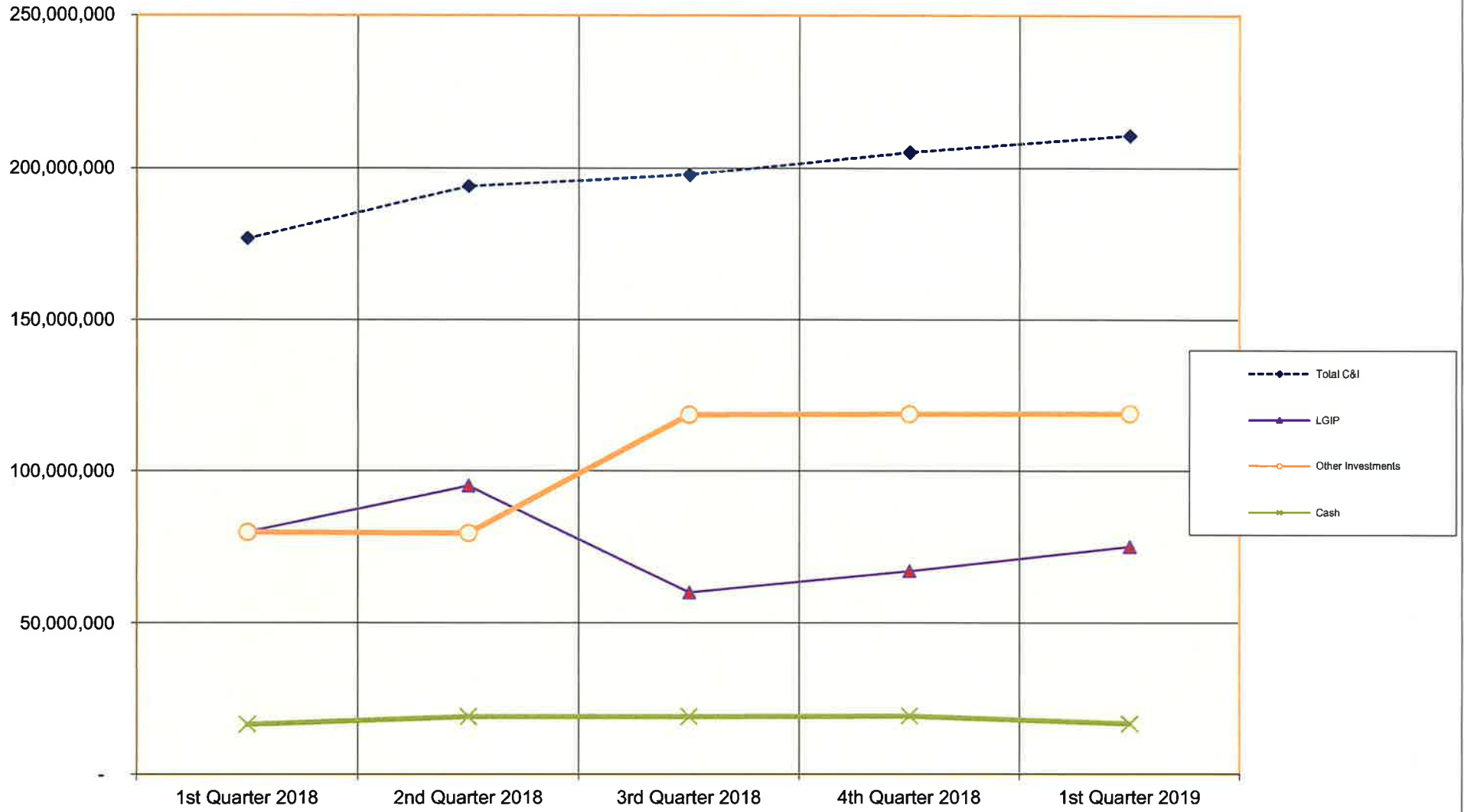
The City is currently carrying greater than adequate liquidity in cash and the LGIP.

Portfolio allocations at 03/31/2019 were in compliance with the City's investment policy.

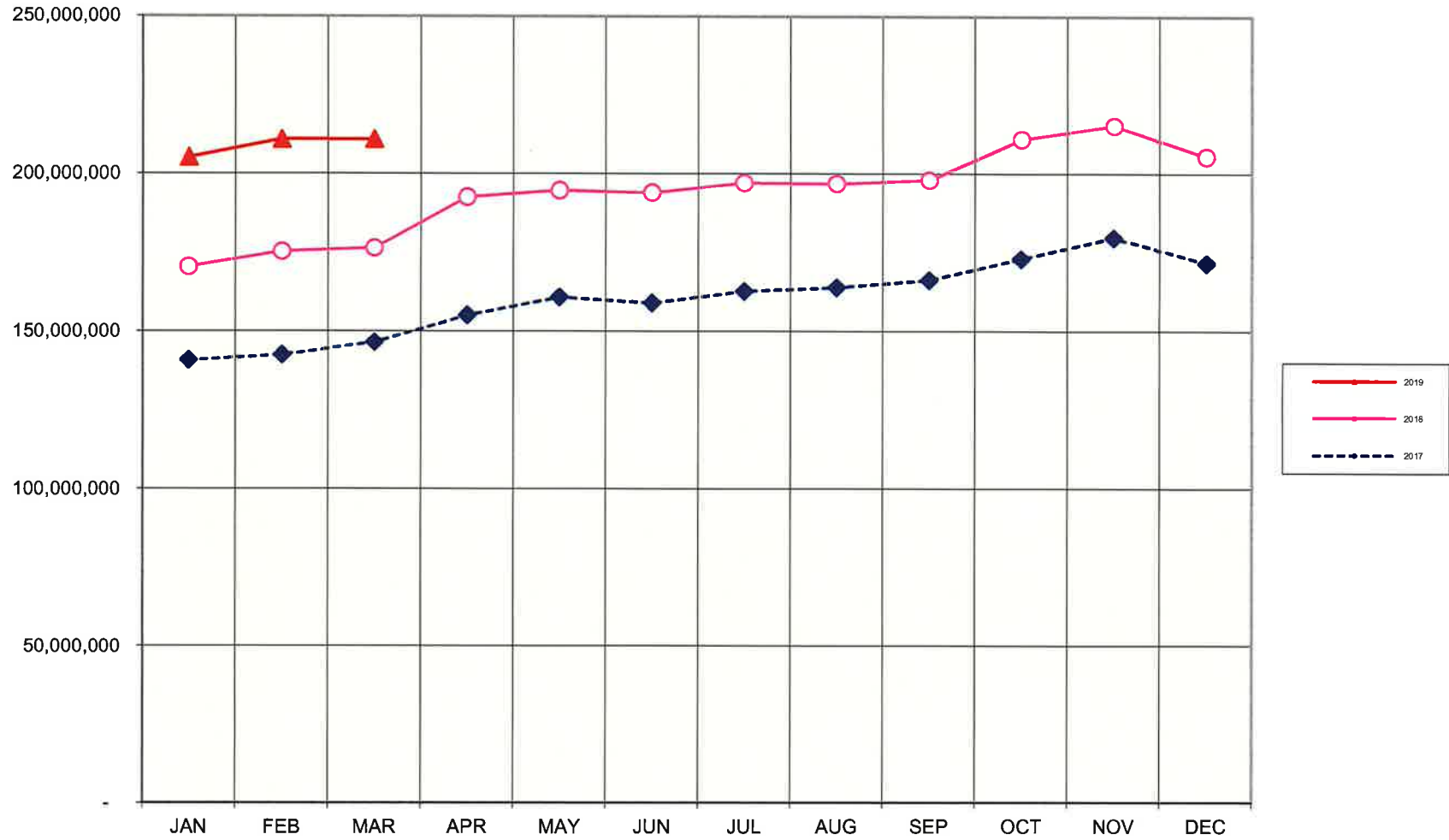
Q1-2019 investment interest revenue: \$1,203,561.48.

YTD -2019 investment interest revenue: \$1,203,561.48.

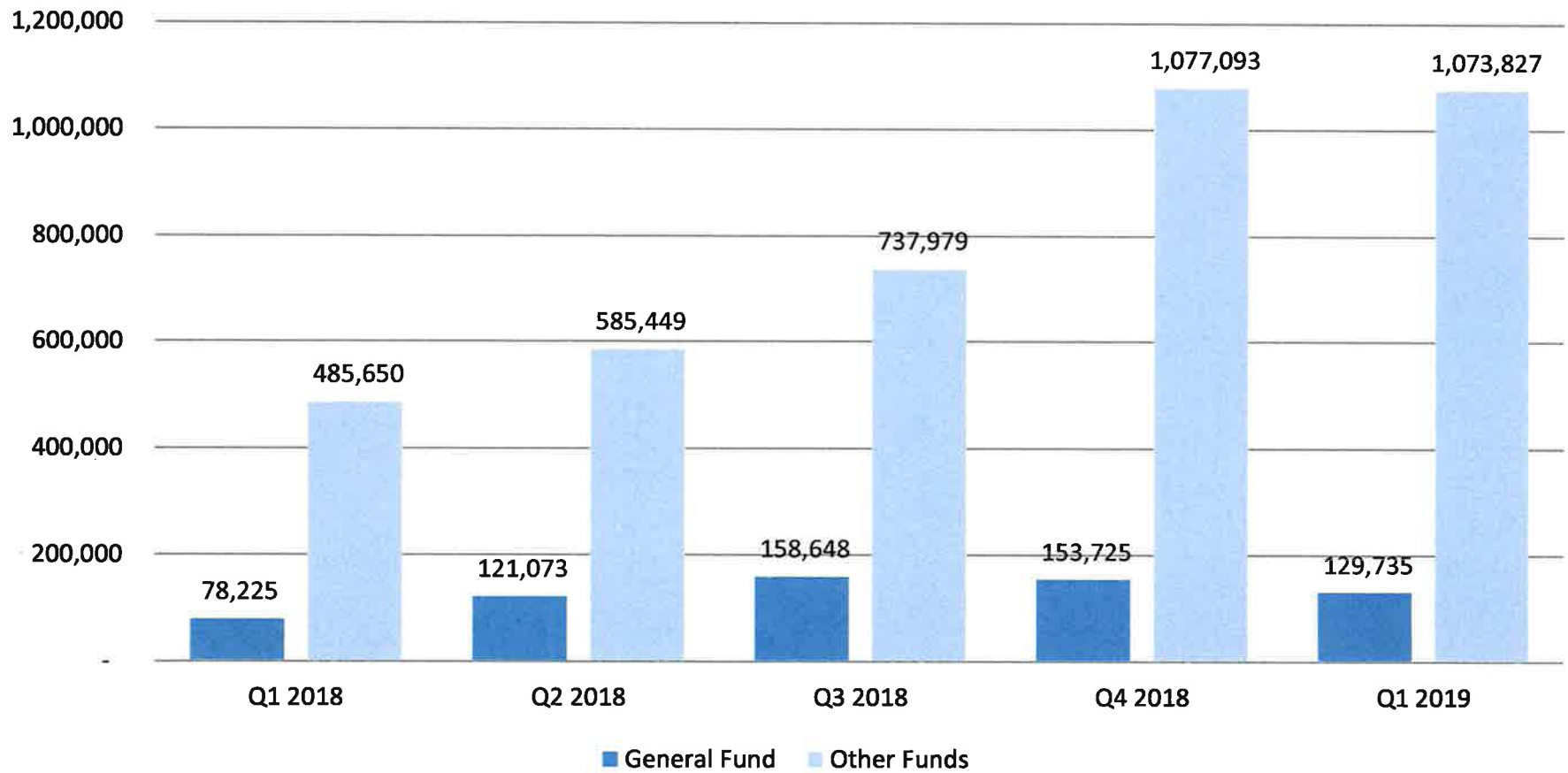
**CITY OF KENT  
CASH AND INVESTMENTS BY TYPE  
QUARTER ENDING BALANCES  
2018 Q1-Q4 AND 2019 Q1**



**CASH AND INVESTMENTS  
MONTH ENDING BALANCES  
2017 / 2018 / 2019**



## Quarterly Interest Earnings Q1, 2018 - Q1, 2019



**Total Cash and Investments By Fund  
March 31, 2019**

1000	General Fund	18,645,075
1100	Street Fund	8,715,958
1200	PS Retiree Healthcare Fund	1,689,924
1300	Lodging Tax Fund	355,942
1400	Youth/Teen Fund	269,608
1500	Capital Resources Fund	15,842,045
1600	Criminal Justice Fund	6,600,852
1800	Housing & Comm Dev Fund	(133,742)
1900	Other Operating Projects Fund	797,824
1950	Kent Events Center Operating Fund	2,443,312
2200	Non-Voted Debt Service Fund	1,438,366
2500	Spec Assess Debt Service Fund	318,671
3100	Street Capital Projects Fund	14,936,246
3200	Parks Capital Projects Fund	14,075,976
3300	Other Capital Projects Fund	1,637,752
3400	Technology Capital Projects Fund	6,253,482
3500	Facilities Capital Projects Fund	37,365
4100	Water Fund	40,777,919
4300	Sewer Fund	(2,242,398)
4400	Drainage Fund	41,504,067
4700	Solid Waste Fund	552,870
4800	Golf Fund	3,973,896
5100	Fleet Service Fund	6,453,768
5200	Central Services Fund	4,371,757
5400	Facilities Management Fund	5,269,983
5600	Insurance Fund	11,147,235
5900	Deferred Compensation Fund	39,154
6200	Firefighters Pension Fund	2,122,817
6400	Deferred Comp Fund	-
6500	Payroll Clearing Fund	124,695
6600	Subsystem Clearing Fund	(17,922)
6700	Utility Clearing Fund	634,259
6800	Agency Clearing Fund	1,605,745
7100	Special Events Center-PFD	437,889
	<b>Total:</b>	<b>210,680,388</b>



## Portfolio Summary and Statistics

For the Month Ending **March 31, 2019**

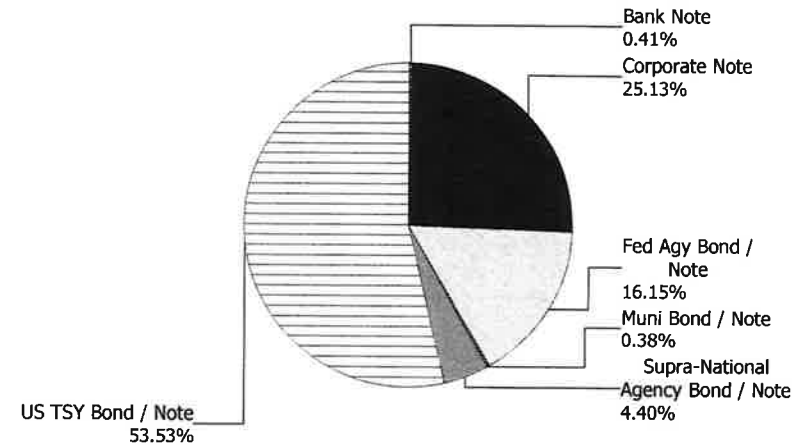
CITY OF KENT - 48820000

### Account Summary

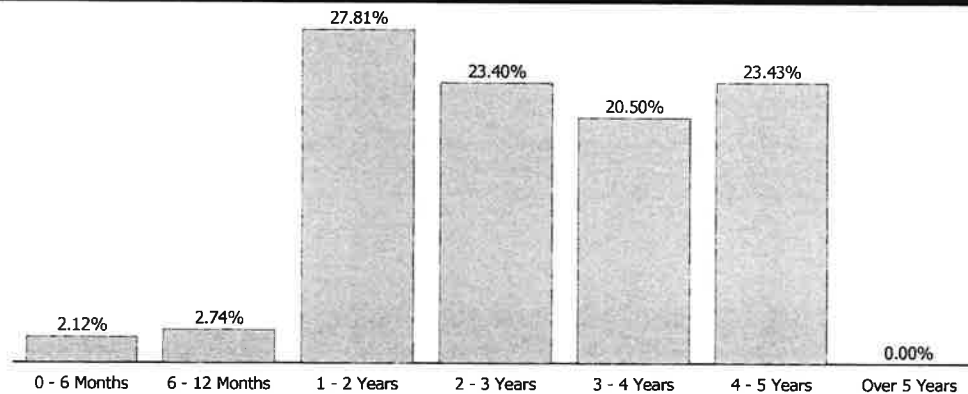
Description	Par Value	Market Value	Percent
U.S. Treasury Bond / Note	64,945,000.00	64,121,600.27	53.53
Supra-National Agency Bond / Note	5,285,000.00	5,276,048.02	4.40
Municipal Bond / Note	455,000.00	459,108.65	0.38
Federal Agency Bond / Note	19,489,000.00	19,347,377.88	16.15
Corporate Note	29,965,000.00	30,106,612.31	25.13
Bank Note	495,000.00	491,875.56	0.41
<b>Managed Account Sub-Total</b>	<b>120,634,000.00</b>	<b>119,802,622.69</b>	<b>100.00%</b>
Accrued Interest		606,813.71	
<b>Total Portfolio</b>	<b>120,634,000.00</b>	<b>120,409,436.40</b>	

**Unsettled Trades** **0.00** **0.00**

### Sector Allocation



### Maturity Distribution



### Characteristics

Yield to Maturity at Cost	2.60%
Yield to Maturity at Market	2.41%
Duration to Worst	2.62
Weighted Average Days to Maturity	1003